



Price

£160,000

Leasehold

1x  1x  1x 

**Burns Avenue, Chadwell
Heath, Essex, RM6 4BN**



Main features

- **Second floor purpose built flat situated in the Redbridge Borough**
- **Ideal purchase for any first time buyers**
- **Walking distance to Chadwell Heath station & Elizabeth Line**
- **Close to local shops & amenities**
- **Allocated parking space**
- **CHAIN FREE & Long Lease**

Accommodation

FIRST FLOOR

Entrance Hall

Lounge/Dining Room/Bedroom : 19'3 x 10'1 (5.87m x 3.08m)

Kitchen: 9'0 x 5'7 (2.75m x 1.70m)

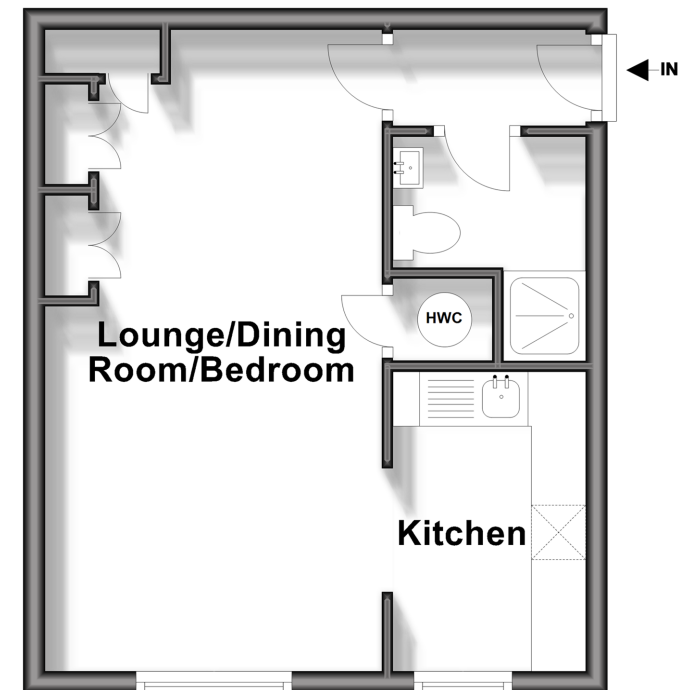
Shower Room

OUTSIDE

Allocated Parking

Second Floor

Approx. 29.4 sq. metres (316.1 sq. feet)



Call Chadwell Heath - 020 8597 0043 ■ douglasallen.co.uk

- A private rental licensing scheme applies to some properties in this area, please contact us before proceeding
- Legal advice should be taken to verify fixtures/fittings, planning, alterations and/or lease details
- Appliances & services are untested, dimensions are approximate and floor plans are not to scale