



Price

£215,000

Leasehold

1x  1x  1x 

**High Road, Chadwell
Heath, Essex, RM6**

OVER 60?

Secure this property
for up to **59% less!**

 **DOUGLAS
ALLEN**
Helping you move forwards



Main features

- Well presented first floor purpose built flat with Long Lease
- Ideal purchase for first time buyers or buy-to-let investors
- Communal parking for 2 spaces
- Walking distance to Chadwell Heath station & Elizabeth Line
- Bus links to Ilford & Romford Town Centres

Accommodation

FIRST FLOOR

Entrance Hall

Lounge/Dining Room: 15'5 x 9'6
(4.70m x 2.90m)

Kitchen: 10'0 x 6'6 (3.05m x 1.98m)

Bedroom: 12'5 x 8'9 (3.79m x 2.67m)

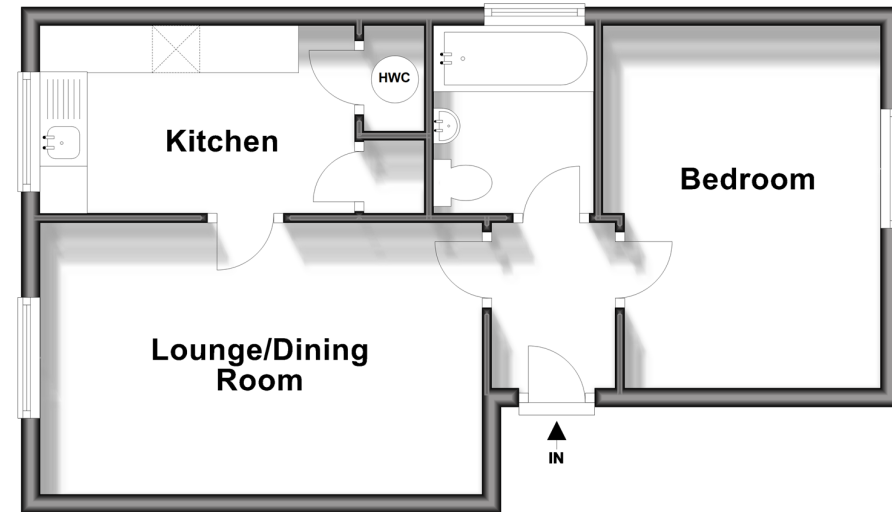
Bathroom

OUTSIDE

Off Street Parking

First Floor

Approx. 39.4 sq. metres (424.2 sq. feet)



Call Chadwell Heath - 020 8597 0043 ■ douglasallen.co.uk

- A private rental licensing scheme applies to some properties in this area, please contact us before proceeding
- Legal advice should be taken to verify fixtures/fittings, planning, alterations and/or lease details
- Appliances & services are untested, dimensions are approximate and floor plans are not to scale
- Through a Homewise Home For Life Plan people aged 60+ can secure this property for up to 59% less, by purchasing a Lifetime Lease.



50713803/20240316/CN/MH