



Price

£100,000

Leasehold

1x  1x  1x 

**Cunningham Close,
Romford, Essex, RM6**



**DOUGLAS
ALLEN**

Helping you move forwards



Second Floor

Approx. 39.5 sq. metres (424.7 sq. feet)

Main features

- Second floor retirement flat with secure intercom entry system
- Lift access to all floors
- Communal residents parking & garden area
- Quiet residential location
- Walking distance to bus links
- Close to local shops & amenities
- OVER 60'S ONLY

Accommodation

SECOND FLOOR

Entrance Hall

Lounge/Dining Area: 16'11 x 10'6 (5.16m x 3.20m)

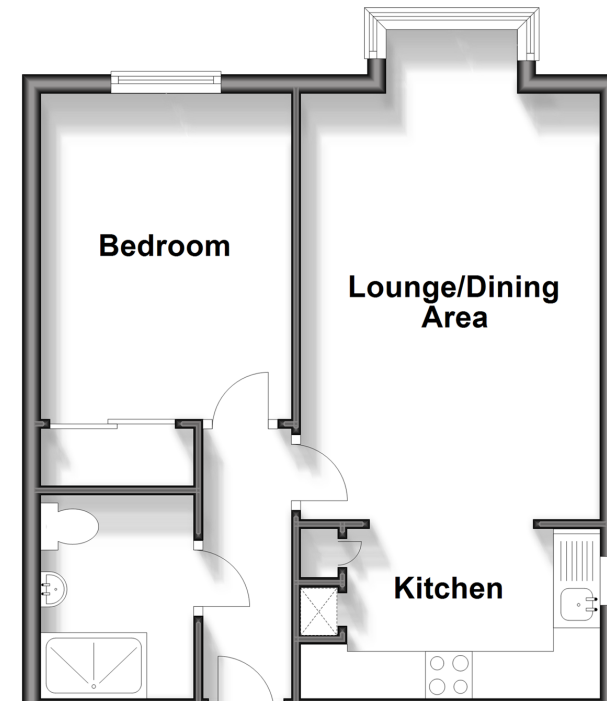
Kitchen: 9'11 x 5'9 (3.02m x 1.75m)

Bedroom : 11'4 x 8'0 (3.46m x 2.44m)

Bathroom

OUTSIDE

Communal Garden



Call Chadwell Heath - 020 8597 0043 ■ douglasallen.co.uk

■ A private rental licensing scheme applies to some properties in this area, please contact us before proceeding

■ Appliances & services are untested, dimensions are approximate and floor plans are not to scale

■ Legal advice should be taken to verify fixtures/fittings, planning, alterations and/or lease details



50713798/20240221/CN/MH