



Price
£265,000

Leasehold

2x  1x  1x 

**Glandford Way,
Chadwell Heath,
Romford, Essex, RM6**

OVER 60?

Secure this property
for up to **59% less!**

 **DOUGLAS
ALLEN**
Helping you move forwards



Main features

- Well presented ground floor purpose built flat
- Modern fitted kitchen with plenty of cupboard space
- Bus & road links to Chadwell Heath station
- Close to shops & local amenities
- Situated in the popular Borough of Redbridge

Accommodation

GROUND FLOOR

Entrance Hall

Lounge/Dining Room: 17'0 x 10'9
(5.19m x 3.28m)

Kitchen: 8'7 x 8'1 (2.62m x 2.47m)

Bedroom 1: 11'3 x 9'7 (3.43m x 2.92m)

Bedroom 2

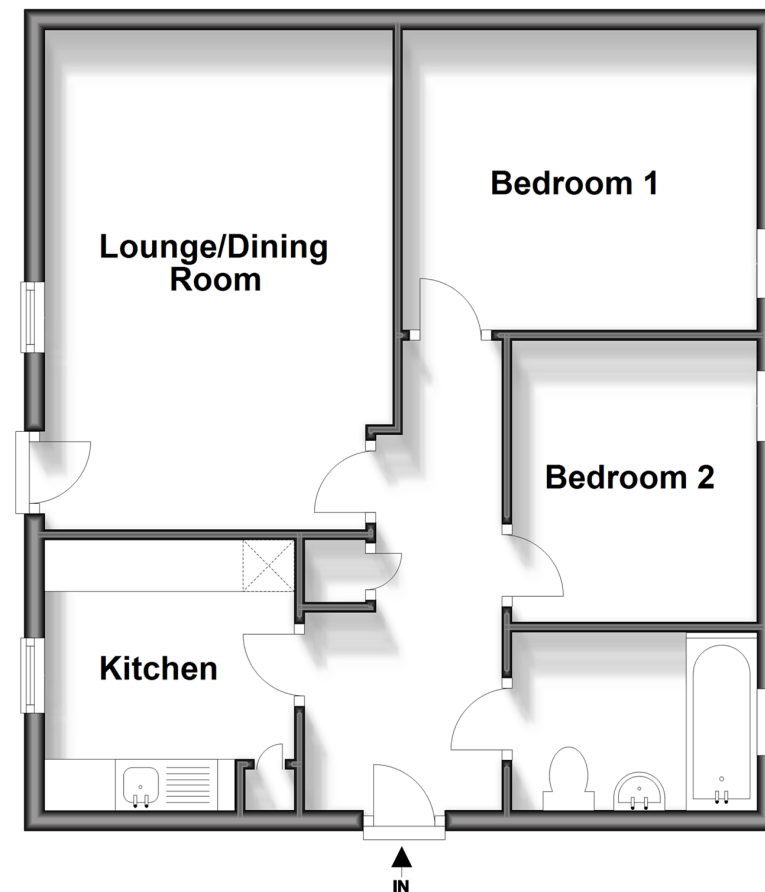
Bathroom

OUTSIDE

Allocated Parking

Ground Floor

Approx. 53.0 sq. metres (570.5 sq. feet)



Call Chadwell Heath - 020 8597 0043 ■ douglasallen.co.uk

- A private rental licensing scheme applies to some properties in this area, please contact us before proceeding
- Legal advice should be taken to verify fixtures/fittings, planning, alterations and/or lease details
- Appliances & services are untested, dimensions are approximate and floor plans are not to scale
- Through a Homewise Home For Life Plan people aged 60+ can secure this property for up to 59% less, by purchasing a Lifetime Lease.

