



Price
£450,000

Freehold

3x  1x  1x 

**Stanley Avenue,
Dagenham, Essex, RM8**

OVER 60?

Secure this property
for up to **59% less!**

 **DOUGLAS
ALLEN**
Helping you move forwards



Main features

- Attractive terraced house with entrance porch
- Off street parking
- Conservatory overlooking the large rear garden
- Close to local Primary & Secondary schools
- Good bus links to Ilford & Romford Town Centres

Accommodation

GROUND FLOOR

Entrance Porch
 Entrance Hall
 Lounge/Dining Room: 24'4 x 10'9 (7.42m x 3.28m)
 Kitchen: 8'4 x 6'9 (2.54m x 2.06m)
 Conservatory: 14'1 x 11'4 (4.30m x 3.46m)

FIRST FLOOR

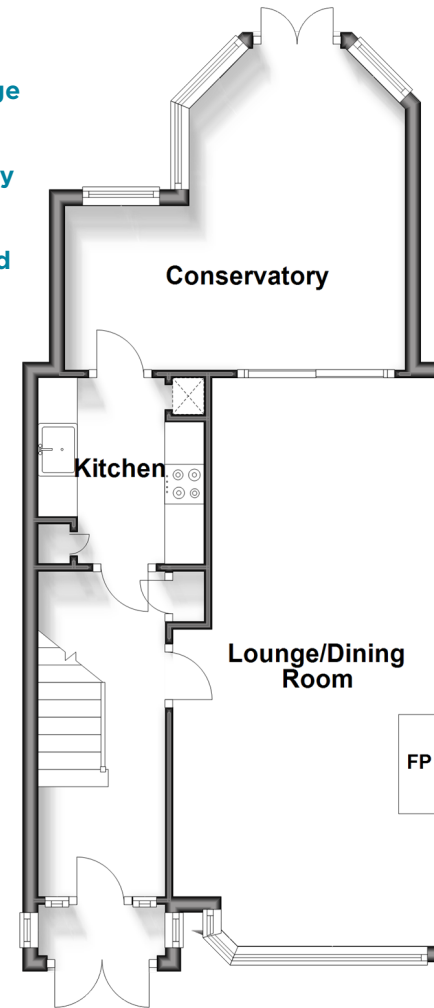
Landing
 Bedroom 1: 11'5 x 10'4 (3.48m x 3.15m)
 Bedroom 2: 12'5 x 10'4 (3.79m x 3.15m)
 Bedroom 3: 6'1 x 6'0 (1.86m x 1.83m)
 Bathroom

OUTSIDE

Rear Garden
 Off Street Parking

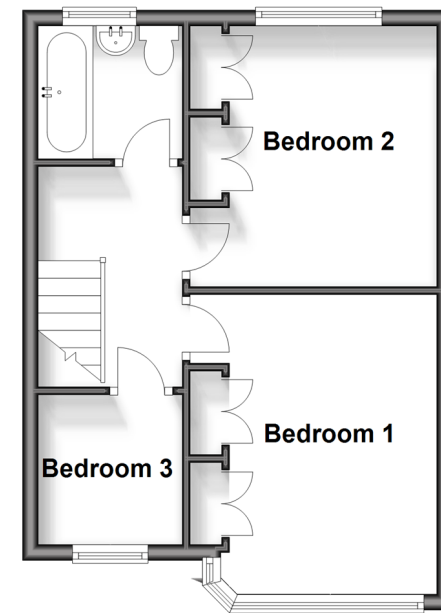
Ground Floor

Approx. 50.4 sq. metres (542.8 sq. feet)



First Floor

Approx. 35.0 sq. metres (376.3 sq. feet)



Call Chadwell Heath - 020 8597 0043 ■ douglasallen.co.uk

- A private rental licensing scheme applies to some properties in this area, please contact us before proceeding
- Legal advice should be taken to verify fixtures/fittings, planning, alterations and/or lease details
- Appliances & services are untested, dimensions are approximate and floor plans are not to scale
- Through a Homewise Home For Life Plan people aged 60+ can secure this property for up to 59% less, by purchasing a Lifetime Lease.



50713754/20240323/CN/NK