



**Price**

**£180,000**

**Leasehold**

1x  1x  1x 

**High Road, Chadwell  
Heath, Essex, RM6**

**OVER 60?**

Secure this property  
for up to **59% less!**

 **DOUGLAS  
ALLEN**  
Helping you move forwards





## Main features

- Low maintenance ground floor purpose built flat
- Ideal purchase for first time buyers or buy-to-let investors
- Allocated parking for two cars
- Walking distance to Chadwell Heath & Goodmayes station
- Close to local supermarkets, restaurants & cafes

## Accommodation

### GROUND FLOOR

Entrance Hall

Lounge/Kitchen/Dining Room: 16'3 x 15'3 (4.96m x 4.65m)

Bedroom : 12'4 x 8'9 (3.76m x 2.67m)

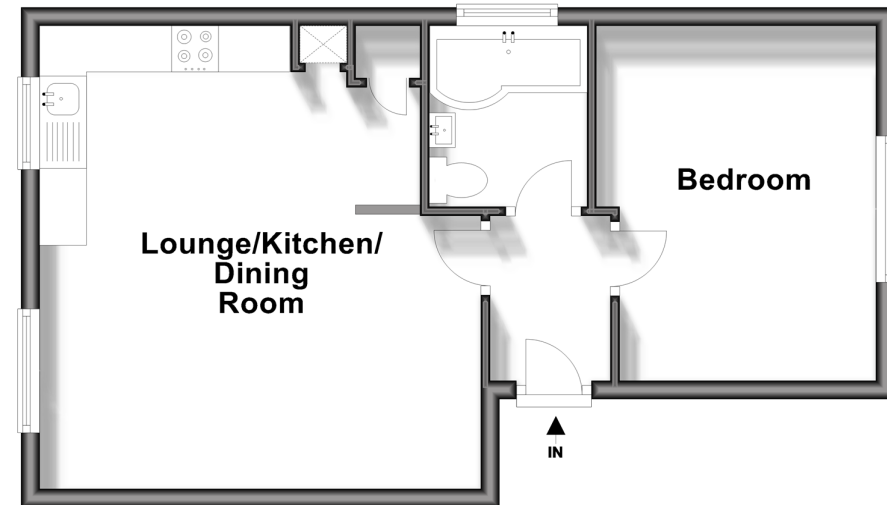
Bathroom

### OUTSIDE

Allocated Parking

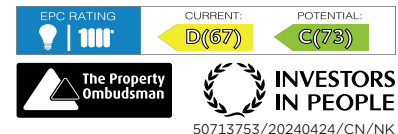
## Ground Floor

Approx. 39.8 sq. metres (428.5 sq. feet)



**Call Chadwell Heath - 020 8597 0043 ■ [douglasallen.co.uk](http://douglasallen.co.uk)**

- A private rental licensing scheme applies to some properties in this area, please contact us before proceeding
- Legal advice should be taken to verify fixtures/fittings, planning, alterations and/or lease details
- Appliances & services are untested, dimensions are approximate and floor plans are not to scale
- Through a Homewise Home For Life Plan people aged 60+ can secure this property for up to 59% less, by purchasing a Lifetime Lease.



50713753/20240424/CN/NK