



**OVER 60?**

Secure this property  
for up to **59% less!**

**Price**

**£475,000**

**Freehold**

3x  1x  1x 

**Pemberton Gardens,  
Chadwell Heath, Essex,  
RM6**

 **DOUGLAS  
ALLEN**  
Helping you move forwards





## Main features

- Semi-detached house with entrance porch
- Conservatory & open plan living area
- Off street parking
- Close to Chadwell Heath station, ideal for commuting
- Being sold CHAIN FREE

## Accommodation

### GROUND FLOOR

Entrance Porch  
 Entrance Hall  
 Lounge/Dining Area: 11'7 x 11'3 (3.53m x 3.43m) plus 11'10 x 10'2 (3.61m x 3.10m)  
 Kitchen: 9'1 x 6'2 (2.77m x 1.88m)  
 Conservatory: 17'3 x 4'7 (5.26m x 1.40m)

### FIRST FLOOR

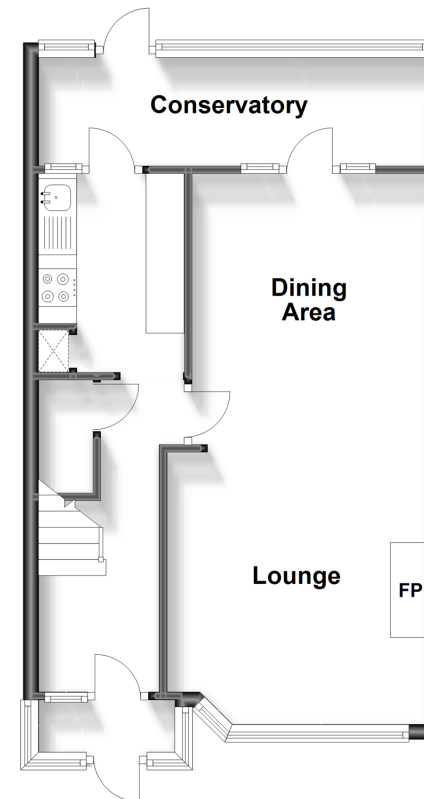
Landing  
 Bedroom 1: 12'2 x 10'5 (3.71m x 3.18m)  
 Bedroom 2: 11'9 x 10'6 (3.58m x 3.20m)  
 Bedroom 3: 7'2 x 6'0 (2.19m x 1.83m)  
 Shower Room

### OUTSIDE

Rear Garden  
 Off Street Parking

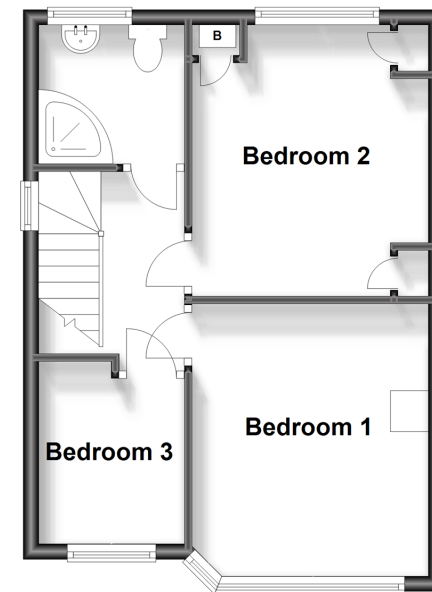
### Ground Floor

Approx. 36.1 sq. metres (388.4 sq. feet)



### First Floor

Approx. 36.4 sq. metres (391.3 sq. feet)



**Call Chadwell Heath - 020 8597 0043 ■ [douglasallen.co.uk](http://douglasallen.co.uk)**

- A private rental licensing scheme applies to some properties in this area, please contact us before proceeding
- Legal advice should be taken to verify fixtures/fittings, planning, alterations and/or lease details
- Appliances & services are untested, dimensions are approximate and floor plans are not to scale
- Through a Homewise Home For Life Plan people aged 60+ can secure this property for up to 59% less, by purchasing a Lifetime Lease.

