



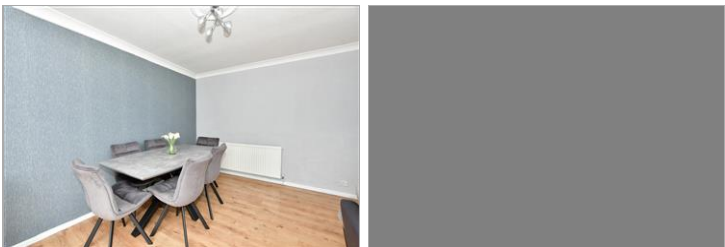
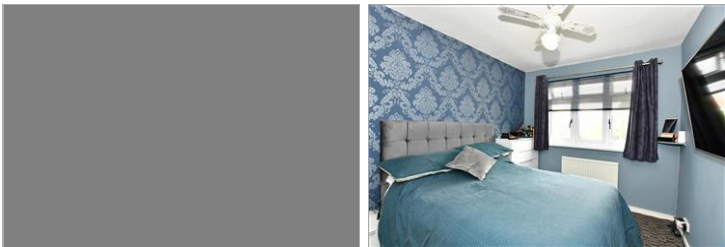
Price
£400,000

Freehold

3x  1x  1x 

**Udall Gardens, Romford,
Essex, RM5**

 **DOUGLAS
ALLEN**
Helping you move forwards



Main features

- Attractive terraced house with off street parking
- Modern fitted kitchen/diner
- First floor family shower room
- Garage to rear & low maintenance garden
- Close to local Primary & Secondary schools
- Good bus & road links

Accommodation

GROUND FLOOR

Entrance Hall

Lounge/Dining Room: 10'7 x 10'4 (3.23m x 3.15m) plus 10'7 x 14'7 (3.23m x 4.45m)

Kitchen: 10'6 x 7'8 (3.20m x 2.34m)

FIRST FLOOR

Landing

Bedroom 1: 10'4 x 9'2 (3.15m x 2.80m)

Bedroom 2: 10'9 x 8'8 (3.28m x 2.64m)

Bedroom 3: 11'6 x 5'4 (3.51m x 1.63m)

Bedroom 4: 14'1 x 5'4 (4.30m x 1.63m)

Shower Room

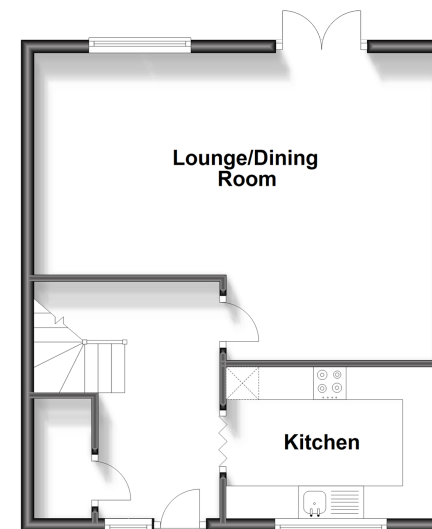
OUTSIDE

Off Street Parking

Garage

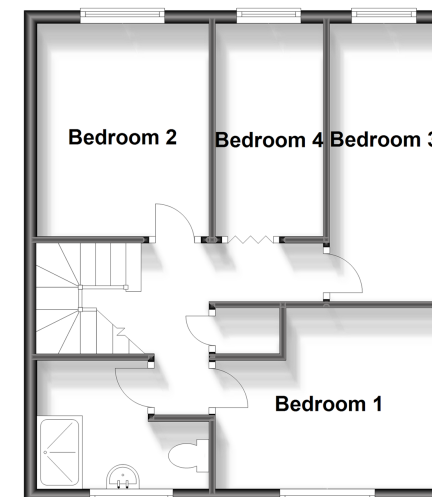
Ground Floor

Approx. 44.0 sq. metres (473.1 sq. feet)



First Floor

Approx. 44.0 sq. metres (473.1 sq. feet)



Call Chadwell Heath - 020 8597 0043 ■ douglasallen.co.uk

- A private rental licensing scheme applies to some properties in this area, please contact us before proceeding
- Legal advice should be taken to verify fixtures/fittings, planning, alterations and/or lease details
- Appliances & services are untested, dimensions are approximate and floor plans are not to scale



50713584/20230701/CN/MH