



OVER 60?

Secure this property
for up to **59% less!**

Price

£250,000

Leasehold

3x  1x  1x 

**Padnall Court, Romford,
Essex, RM6**

 **DOUGLAS
ALLEN**
Helping you move forwards



Main features

- **Spacious first floor purpose built flat**
- **Balcony overlooking communal gardens**
- **Family bathroom & separate toilet**
- **Large open plan lounge/dining area, ideal for entertaining guests**
- **Bus links to Newbury Park & Chadwell Heath station**
- **Walking distance to local shops & amenities**

Accommodation

FIRST FLOOR

Entrance Hall

Lounge/Diner: 13'11 x 13'2 (4.24m x 4.02m)

Kitchen: 8'2 x 7'8 (2.49m x 2.34m)

Bedroom 1: 12'2 x 12'0 (3.71m x 3.66m)

Bedroom 2: 9'11 x 9'7 (3.02m x 2.92m)

Bedroom 3: 8'5 x 6'8 (2.57m x 2.03m)

Bathroom

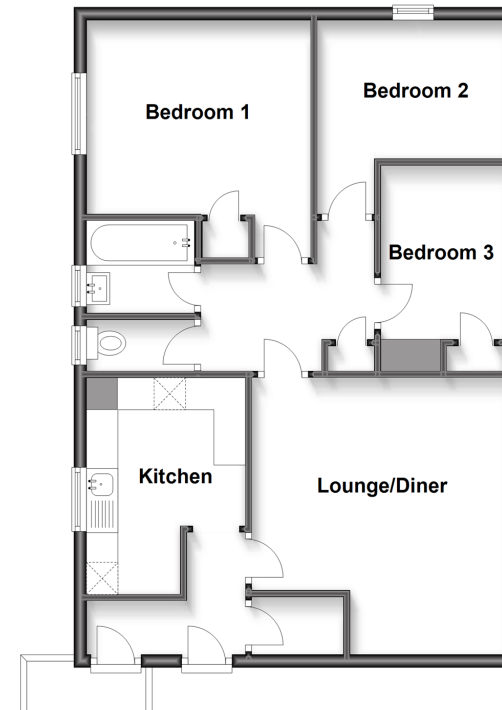
Separate Toilet

OUTSIDE

Communal Garden

First Floor

Approx. 66.2 sq. metres (712.8 sq. feet)



Call Chadwell Heath - 020 8597 0043 ■ douglasallen.co.uk

- A private rental licensing scheme applies to some properties in this area, please contact us before proceeding
- Appliances & services are untested, dimensions are approximate and floor plans are not to scale

- Legal advice should be taken to verify fixtures/fittings, planning, alterations and/or lease details
- Through a Homewise Home For Life Plan people aged 60+ can secure this property for up to 59% less, by purchasing a Lifetime Lease.