



**Price**  
**£350,000**

**Freehold**

2x  1x  1x 

**Valence Avenue,  
Dagenham, Essex, RM8**

**OVER 60?**

Secure this property  
for up to **59% less!**



**Video Tour available**



**DOUGLAS  
ALLEN**

Helping you move forwards





## Main features

- This terraced house is situated in a sought after location
- A blank canvas with a large open plan lounge/dining area
- First floor family bathroom
- Fitted kitchen with lots of storage space
- Walking distance to Chadwell Heath station

## Accommodation

### GROUND FLOOR

Entrance Hall

Lounge/Dining Area: 14'9 x 10'9 (4.50m x 3.28m) plus 9'5 x 10'9 (2.87m x 3.28m)

Kitchen: 10'11 x 5'11 (3.33m x 1.80m)

### FIRST FLOOR

Landing

Bedroom 1: 13'11 x 12'5 (4.24m x 3.79m)

Bedroom 2: 10'10 x 9'1 (3.30m x 2.77m)

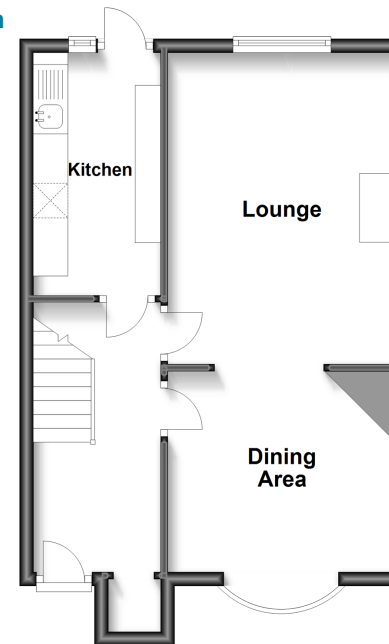
Bathroom

### OUTSIDE

Front and Rear Garden

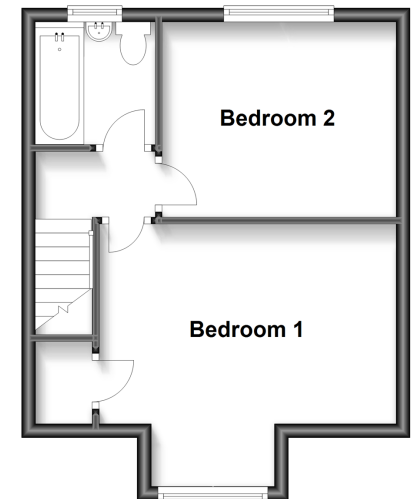
### Ground Floor

Approx. 39.9 sq. metres (429.7 sq. feet)



### First Floor

Approx. 31.8 sq. metres (342.0 sq. feet)



**Call Chadwell Heath - 020 8597 0043 ■ [douglasallen.co.uk](http://douglasallen.co.uk)**

- A private rental licensing scheme applies to some properties in this area, please contact us before proceeding
- Legal advice should be taken to verify fixtures/fittings, planning, alterations and/or lease details
- Appliances & services are untested, dimensions are approximate and floor plans are not to scale
- Through a Homewise Home For Life Plan people aged 60+ can secure this property for up to 59% less, by purchasing a Lifetime Lease.



50713523/20230603/CN/MH