



Price
£575,000

Freehold

3x  2x  2x 

**Eccleston Crescent,
Romford, Essex, RM6**

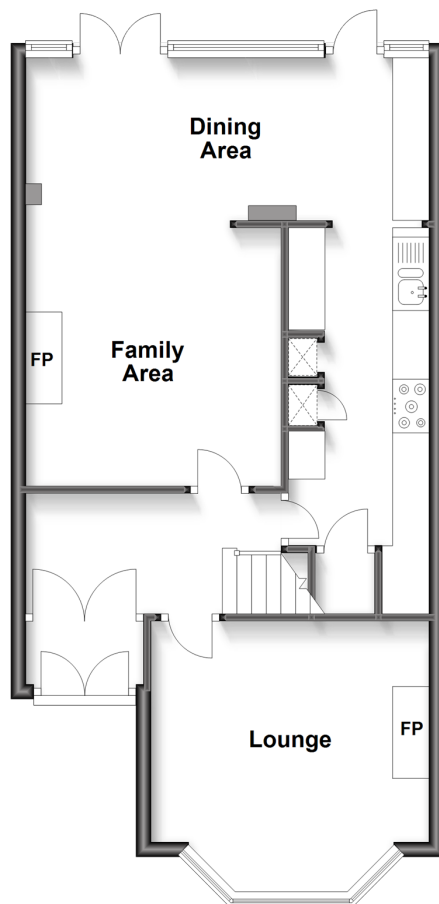
OVER 60?

Secure this property
for up to **59% less!**

 **DOUGLAS
ALLEN**
Helping you move forwards

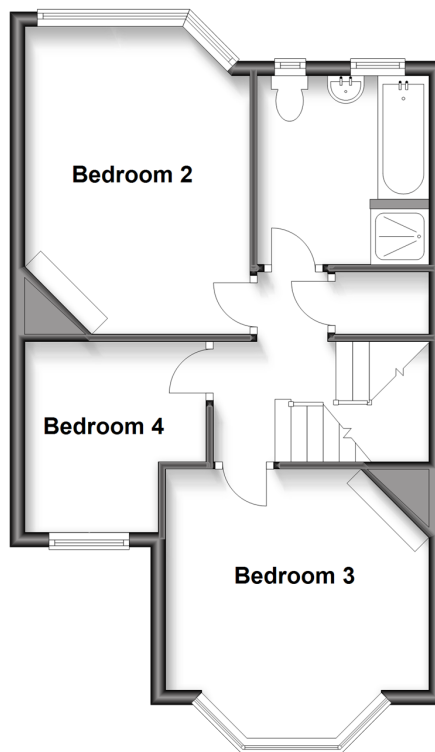
Ground Floor

Approx. 54.3 sq. metres (584.4 sq. feet)



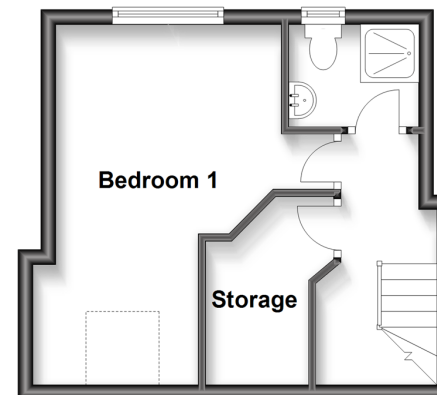
First Floor

Approx. 44.2 sq. metres (476.2 sq. feet)



Second Floor

Approx. 25.5 sq. metres (274.8 sq. feet)



Accommodation

GROUND FLOOR

Entrance Porch

Entrance Hall

Lounge : 13'2 x 12'6 (4.02m x 3.81m)

Family Area/Dining Area: 11'10 x 11'2
(3.61m x 3.41m) plus 10'11 x 7'0
(3.33m x 2.14m)

Kitchen: 23'0 x 6'5 (7.02m x 1.96m)

FIRST FLOOR

Landing

Bedroom 3: 13'9 x 12'1 (4.19m x 3.69m)

Bedroom 2: 13'5 x 10'9 (4.09m x
3.28m)

Bedroom 4: 8'9 x 8'8 (2.67m x 2.64m)

Bathroom

SECOND FLOOR

Bedroom 1: 16'7 x 12'5 (5.06m x 3.79m)

Shower Room

Storage: 7'3 x 5'11 (2.21m x 1.80m)

OUTSIDE

Rear Garden

Off Street Parking



Main features

- Attractive terraced house with off street parking
- Situated in the sought after Redbridge Borough
- Walking distance to Goodmayes station, ideal for commuting
- Close to Chadwell Heath Academy & Barley Lane Primary school
- Loft room with walk-in storage room & separate shower room/toilet



Nearest Schools

Primary Schools: Barley Lane Primary 0.0 miles, Chadwell Primary 0.2 miles, Farnham Green Primary 0.3 miles

Secondary Schools: The Chadwell Heath Foundation School 0.2 miles, Mayfield School 0.4 miles



Transport Information

Train Stations: Goodmayes 0.3 miles, Chadwell Heath 0.6 miles, Seven Kings 0.8 miles

Underground Newbury Park 1.1 miles, Barkingside 1.5 miles



Address

Eccleston Crescent, Romford, Essex, RM6



Directions

For directions to this property please contact us.



Call Chadwell Heath Branch 020 8597 0043 ■ douglasallen.co.uk



- A private rental licensing scheme applies to some properties in this area, please contact us before proceeding
- Appliances & services are untested, dimensions are approximate and floor plans are not to scale

- Legal advice should be taken to verify fixtures/fittings, planning, alterations and/or lease details
- Through a Homewise Home For Life Plan people aged 60+ can secure this property for up to 59% less, by purchasing a Lifetime Lease.



50713511/20240120/CN/MH