



Price

£475,000

Freehold

3x  2x  1x 

**Mansted Gardens,
Romford, Essex, RM6**

OVER 60?

Secure this property
for up to **59% less!**



Video Tour available



**DOUGLAS
ALLEN**

Helping you move forwards



Main features

- Extended terraced house with off street parking
- Spacious family area overlooking the rear garden
- Situated in the Redbridge Borough
- Close to shops & local amenities
- Walking distance to Chadwell Heath station, perfect for commuting

Accommodation

GROUND FLOOR

Entrance Porch
 Entrance Hall
 Lounge/Dining Area: 14'4 x 11'10 (4.37m x 3.61m) plus 13'0 x 10'3 (3.97m x 3.13m)
 Kitchen: 8'7 x 7'4 (2.62m x 2.24m)
 Family Area: 14'3 x 9'7 (4.35m x 2.92m)
 Shower Room/WC

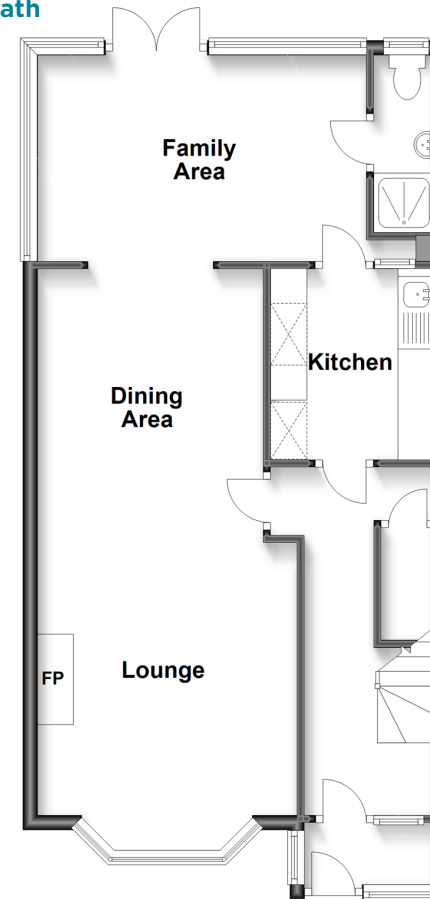
FIRST FLOOR

Landing
 Bedroom 1: 14'1 x 11'0 (4.30m x 3.36m)
 Bedroom 2: 12'4 x 11'0 (3.76m x 3.36m)
 Bedroom 3: 8'7 x 6'11 (2.62m x 2.11m)
 Shower Room

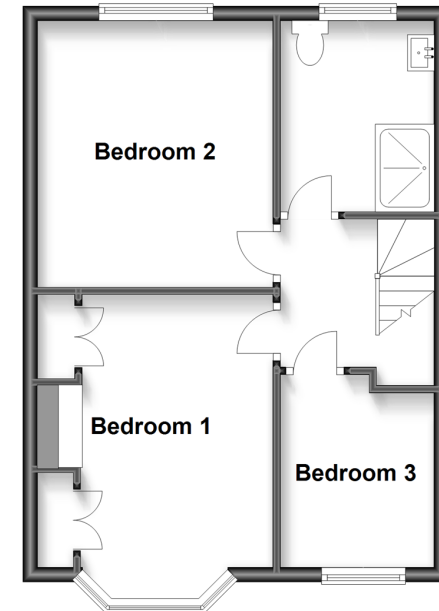
OUTSIDE

Rear Garden
 Off Street Parking

Ground Floor
 Approx. 57.9 sq. metres (622.7 sq. feet)



First Floor
 Approx. 41.6 sq. metres (447.8 sq. feet)



Call Chadwell Heath - 020 8597 0043 ■ douglasallen.co.uk

- A private rental licensing scheme applies to some properties in this area, please contact us before proceeding
- Legal advice should be taken to verify fixtures/fittings, planning, alterations and/or lease details
- Appliances & services are untested, dimensions are approximate and floor plans are not to scale
- Through a Homewise Home For Life Plan people aged 60+ can secure this property for up to 59% less, by purchasing a Lifetime Lease.



50713503/20230708/CN/MH