



**Price**  
**£400,000**

**Freehold**

2x  1x  1x 

**Beverley Road,  
Dagenham, Essex, RM9**

**OVER 60?**

Secure this property  
for up to **59% less!**

 **DOUGLAS  
ALLEN**  
Helping you move forwards





## Main features

- End of terrace house with great kerb appeal
- Good size entrance porch & off street parking
- Ideal purchase for first time buyers
- Bus & road links to Romford & Barking Town Centres
- Being sold CHAIN FREE

## Accommodation

### GROUND FLOOR

Entrance Porch  
Entrance Hall  
Lounge: 13'8 x 11'7 (4.17m x 3.53m)  
Kitchen/Breakfast Room: 16'7 x 9'5 (5.06m x 2.87m)

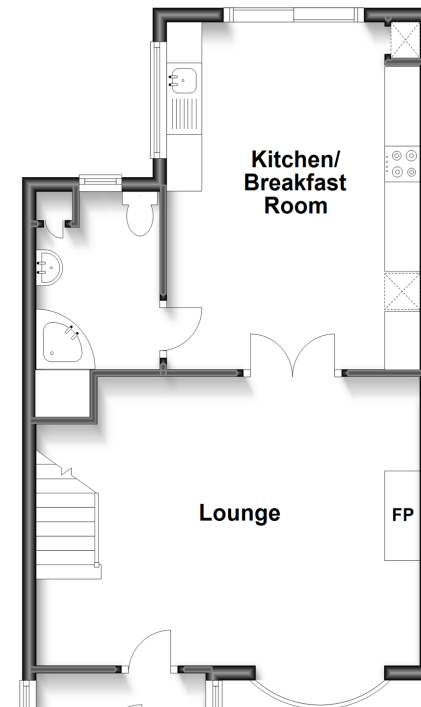
### FIRST FLOOR

Landing  
Bedroom 1: 11'7 x 9'2 (3.53m x 2.80m)  
Bedroom 2: 10'9 x 9'1 (3.28m x 2.77m)  
Shower Room

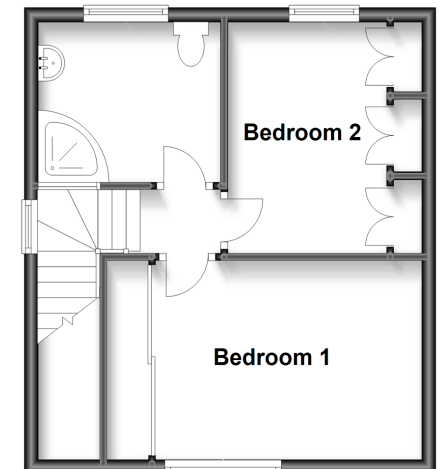
### OUTSIDE

Rear Garden  
Off Street Parking

**Ground Floor**  
Approx. 47.3 sq. metres (509.0 sq. feet)



**First Floor**  
Approx. 33.4 sq. metres (359.0 sq. feet)



**Call Chadwell Heath - 020 8597 0043 ■ [douglasallen.co.uk](http://douglasallen.co.uk)**

- A private rental licensing scheme applies to some properties in this area, please contact us before proceeding
- Appliances & services are untested, dimensions are approximate and floor plans are not to scale

- Legal advice should be taken to verify fixtures/fittings, planning, alterations and/or lease details
- Through a Homewise Home For Life Plan people aged 60+ can secure this property for up to 59% less, by purchasing a Lifetime Lease.