



Price

£265,000

Leasehold

2x  1x  1x 

**Milton Court, Cross
Road, Chadwell Heath,
Romford, Essex, RM6**

OVER 60?

Secure this property
for up to **59% less!**



Video Tour available



**DOUGLAS
ALLEN**

Helping you move forwards



Main features

- This first floor purpose built flat is situated in the Redbridge Borough
- Fitted kitchen with plenty of worktop space & storage
- Allocated parking & communal garden
- Walking distance to Chadwell Heath station & local supermarket
- Close to good road & bus links

Accommodation

FIRST FLOOR

Entrance Hall

Lounge/Diner: 15'11 x 12'2 (4.85m x 3.71m)

Kitchen: 8'3 x 6'3 (2.52m x 1.91m)

Bedroom 1: 13'4 x 9'1 (4.07m x 2.77m)

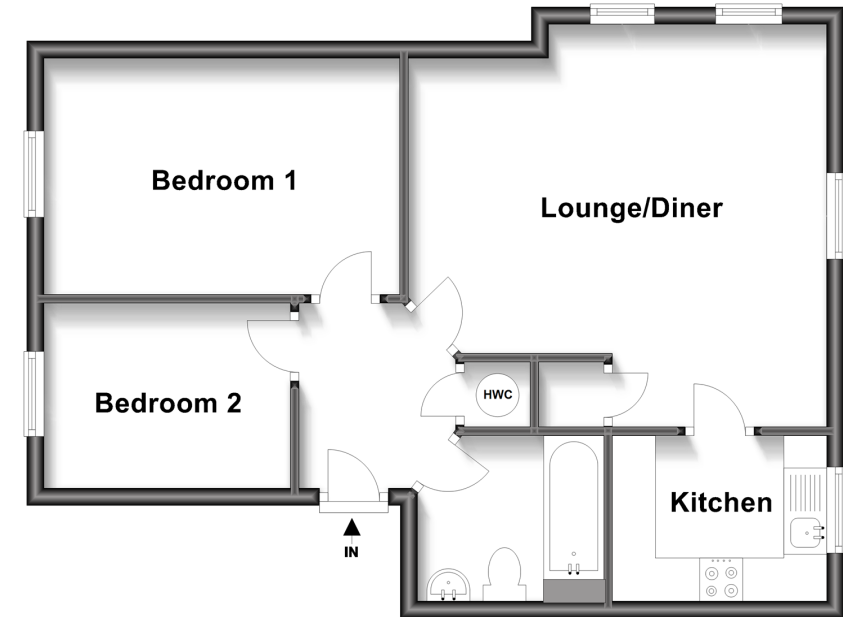
Bedroom 2: 9'5 x 6'8 (2.87m x 2.03m)

OUTSIDE

Allocated Parking
Communal Garden

First Floor

Approx. 53.0 sq. metres (570.3 sq. feet)



Call Chadwell Heath - 020 8597 0043 ■ douglasallen.co.uk

- A private rental licensing scheme applies to some properties in this area, please contact us before proceeding
- Legal advice should be taken to verify fixtures/fittings, planning, alterations and/or lease details
- Appliances & services are untested, dimensions are approximate and floor plans are not to scale
- Through a Homewise Home For Life Plan people aged 60+ can secure this property for up to 59% less, by purchasing a Lifetime Lease.



50713436/20230209/CN/JR