



**Price**

**£130,000**

**Leasehold**

2x  1x  1x 

**Cunningham Close,  
Romford, Essex, RM6**

**OVER 60?**

Secure this property  
for up to **59% less!**



**Video Tour available**



**DOUGLAS  
ALLEN**

Helping you move forwards





## Main features

- A first floor retirement flat with secure intercom entry system
- Communal communal garden area
- Quiet Residential location
- Situated within walking distance to road & bus links
- OVER 60'S ONLY

## Accommodation

### FIRST FLOOR

Entrance Hall

Lounge: 19'3 x 10'2 (5.87m x 3.10m)

Kitchen/Dining Area: 8'3 x 7'1 (2.52m x 2.16m)  
plus 8'9 x 7'1 (2.67m x 2.16m)

Bedroom 1: 11'0 x 9'9 (3.36m x 2.97m)

Bedroom 2: 9'9 x 6'3 (2.97m x 1.91m)

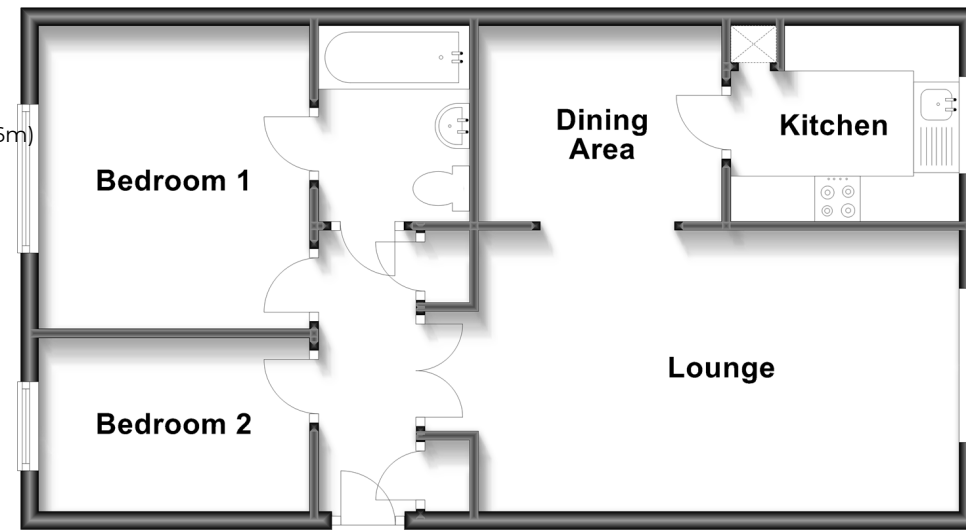
Bathroom

### OUTSIDE

Communal Garden

## First Floor

Approx. 54.3 sq. metres (584.6 sq. feet)



**Call Chadwell Heath - 020 8597 0043 ■ [douglasallen.co.uk](http://douglasallen.co.uk)**

- A private rental licensing scheme applies to some properties in this area, please contact us before proceeding
- Legal advice should be taken to verify fixtures/fittings, planning, alterations and/or lease details
- Appliances & services are untested, dimensions are approximate and floor plans are not to scale
- Through a Homewise Home For Life Plan people aged 60+ can secure this property for up to 59% less, by purchasing a Lifetime Lease.



50713425/20231028/MH/JR