



**Price**

**£260,000**

**Leasehold**

2x  1x  1x 

**Bengeo Gardens,  
Romford, Essex, RM6**

**OVER 60?**

Secure this property  
for up to **59% less!**



**Video Tour available**



**DOUGLAS  
ALLEN**

Helping you move forwards





## Main features

- **Second floor purpose built flat situated within the popular Redbridge Borough**
- **Allocated parking space & communal gardens**
- **Walking distance to bus links to Chadwell Heath station & High Rd**
- **Ideal purchase for first time buyers or buy-to-let investors**
- **Close to local amenities, parks & places of worship**

## Accommodation

### SECOND FLOOR

Entrance Hall

Lounge/Diner: 18'7 (5.67m) x 12'2 at widest point (3.71m) narrowing to 8'8 at narrowest point (2.64m)

Kitchen/Breakfast Room: 12'0 x 8'8 (3.66m x 2.64m)

Bedroom 1: 13'3 x 8'7 (4.04m x 2.62m)

Bedroom 2: 9'6 x 7'7 (2.90m x 2.31m)

Bathroom

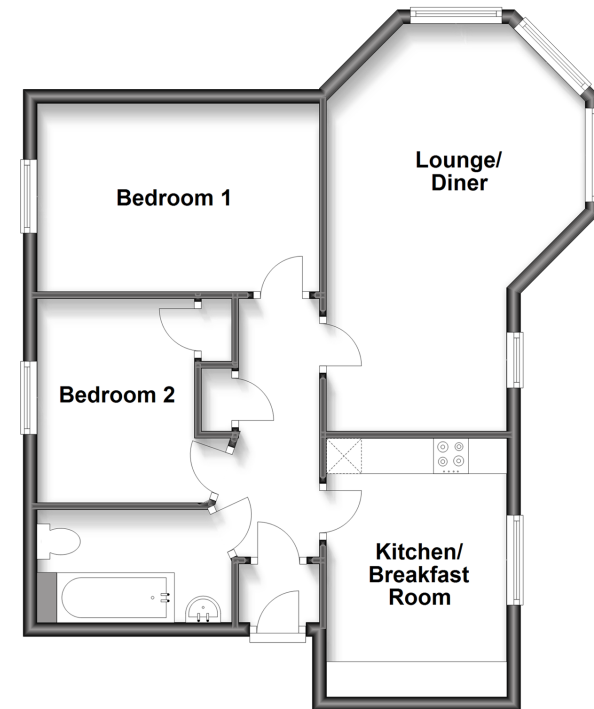
### OUTSIDE

Allocated Parking

Communal Garden

### Second Floor

Approx. 57.5 sq. metres (618.5 sq. feet)



**Call Chadwell Heath - 020 8597 0043 ■ [douglasallen.co.uk](http://douglasallen.co.uk)**

- A private rental licensing scheme applies to some properties in this area, please contact us before proceeding
- Appliances & services are untested, dimensions are approximate and floor plans are not to scale

- Legal advice should be taken to verify fixtures/fittings, planning, alterations and/or lease details
- Through a Homewise Home For Life Plan people aged 60+ can secure this property for up to 59% less, by purchasing a Lifetime Lease.