



Guide Price
£250,000

Leasehold

2x  1x  1x 

**Oreil House, London
Road, Romford, Essex,
RM7**

OVER 60?

Secure this property
for up to **59% less!**



Video Tour available



**DOUGLAS
ALLEN**

Helping you move forwards



Main features

- Ground floor flat with own allocated parking space
- Ideal for first time buyers or buy-to-let investors
- Bus & road links to Romford & Ilford Town Centres
- Close to Primary & Secondary schools
- BEING SOLD CHAIN FREE

Accommodation

GROUND FLOOR

Entrance Hall

Lounge/Diner: 17'7 x 10'3 (5.36m x 3.13m)

Kitchen: 10'3 x 6'2 (3.13m x 1.88m)

Bedroom 1: 11'10 x 7'4 (3.61m x 2.24m)

Bedroom 2: 15'3 x 8'8 (4.65m x 2.64m)

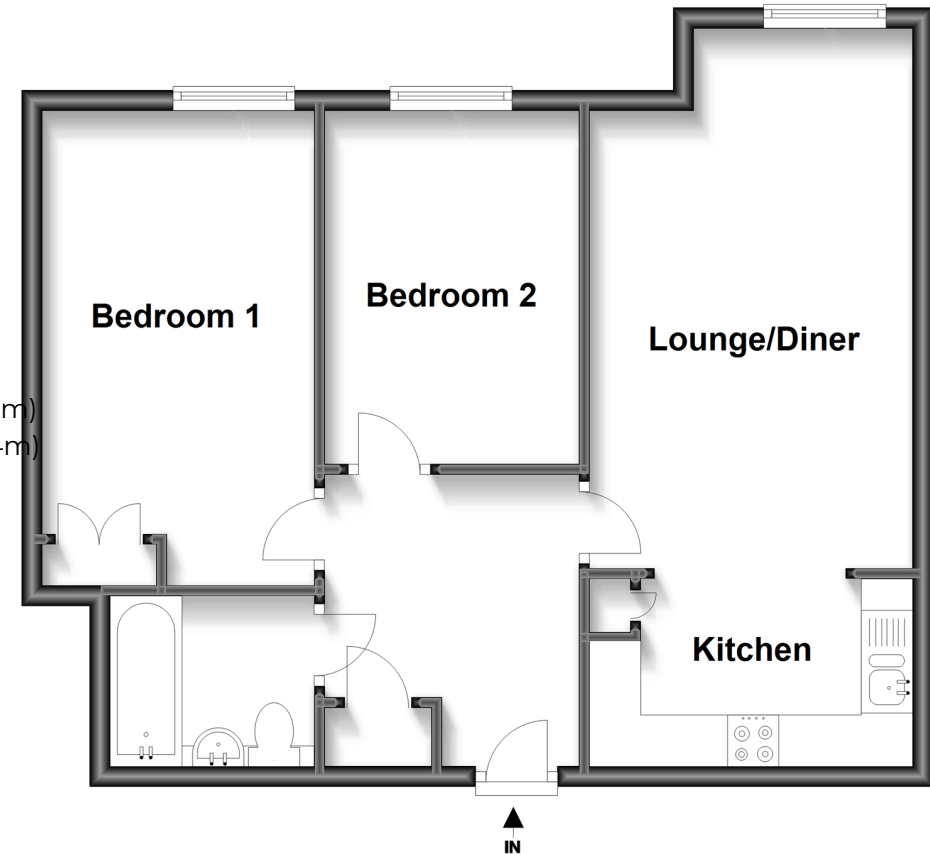
Bathroom

OUTSIDE

Allocated Parking

Ground Floor

Approx. 54.7 sq. metres (589.3 sq. feet)



Call Chadwell Heath - 020 8597 0043 ■ douglasallen.co.uk

- A private rental licensing scheme applies to some properties in this area, please contact us before proceeding
- Legal advice should be taken to verify fixtures/fittings, planning, alterations and/or lease details
- Appliances & services are untested, dimensions are approximate and floor plans are not to scale
- Through a Homewise Home For Life Plan people aged 60+ can secure this property for up to 59% less, by purchasing a Lifetime Lease.



50713331/20240504/CN/MH