



**Price**  
**£550,000**

**Freehold**

3x  1x  2x 

**Primrose Avenue,  
Romford, Essex, RM6**

**OVER 60?**

Secure this property  
for up to **59% less!**



Video Tour available



**DOUGLAS  
ALLEN**

Helping you move forwards





## Main features

- Attractive end of terrace house situated within the popular Redbridge Borough
- Lounge & dining room, ideal for family gatherings
- Conservatory overlooking the rear garden
- Off street parking & garage to side

## Accommodation

### GROUND FLOOR

Entrance Hall

Lounge: 14'2 x 12'3 (4.32m x 3.74m)

Dining Room: 14'5 x 10'11 (4.40m x 3.33m)

Kitchen: 10'0 x 6'9 (3.05m x 2.06m)

Conservatory: 17'3 x 8'6 (5.26m x 2.59m)

### FIRST FLOOR

Landing

Bedroom 1: 11'7 x 11'4 (3.53m x 3.46m)

Bedroom 2: 14'5 x 11'4 (4.40m x 3.46m)

Bedroom 3: 8'0 x 6'7 (2.44m x 2.01m)

Bathroom

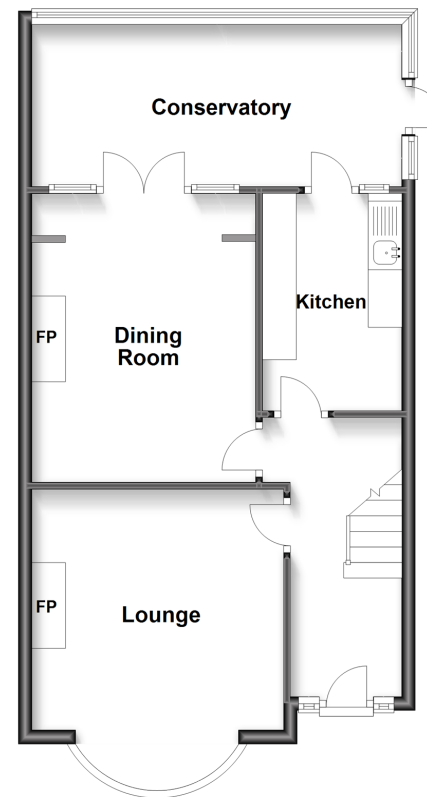
### OUTSIDE

Rear Garden

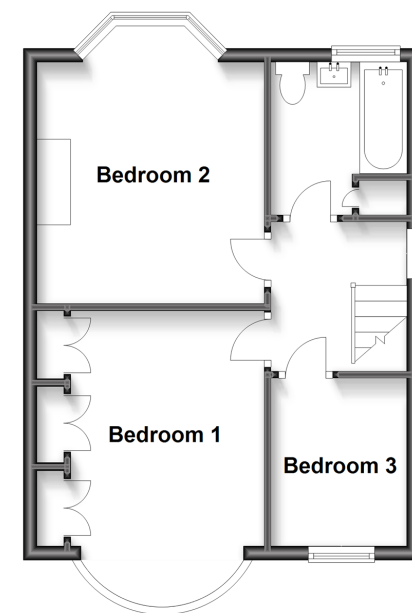
Garage

Off Street Parking

**Ground Floor**  
Approx. 56.1 sq. metres (603.4 sq. feet)

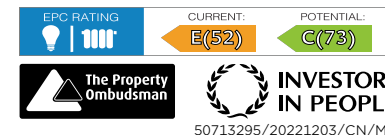


**First Floor**  
Approx. 39.5 sq. metres (425.6 sq. feet)



**Call Chadwell Heath - 020 8597 0043 ■ [douglasallen.co.uk](http://douglasallen.co.uk)**

- A private rental licensing scheme applies to some properties in this area, please contact us before proceeding
- Legal advice should be taken to verify fixtures/fittings, planning, alterations and/or lease details
- Appliances & services are untested, dimensions are approximate and floor plans are not to scale
- Through a Homewise Home For Life Plan people aged 60+ can secure this property for up to 59% less, by purchasing a Lifetime Lease.



50713295/20221203/CN/MH