



Price

£150,000

Leasehold

2x  1x  1x 

**Cunningham Close,
Romford, Essex, RM6**

OVER 60?

Secure this property
for up to **59% less!**



Video Tour available



**DOUGLAS
ALLEN**

Helping you move forwards



Main features

- A first floor retirement flat with secure intercom entry system
- Communal residents parking & communal garden area
- Quiet Residential location
- Situated within walking distance to road & bus links
- OVER 60'S ONLY

Accommodation

FIRST FLOOR

Entrance Hall

Lounge: 15'9 x 10'1 (4.80m x 3.08m)

Dining Area: 8'8 x 7'1 (2.64m x 2.16m)

Kitchen: 7'2 x 6'8 (2.19m x 2.03m)

Bedroom 1: 11'0 x 9'4 (3.36m x 2.85m)

Bedroom 2: 9'7 x 6'3 (2.92m x 1.91m)

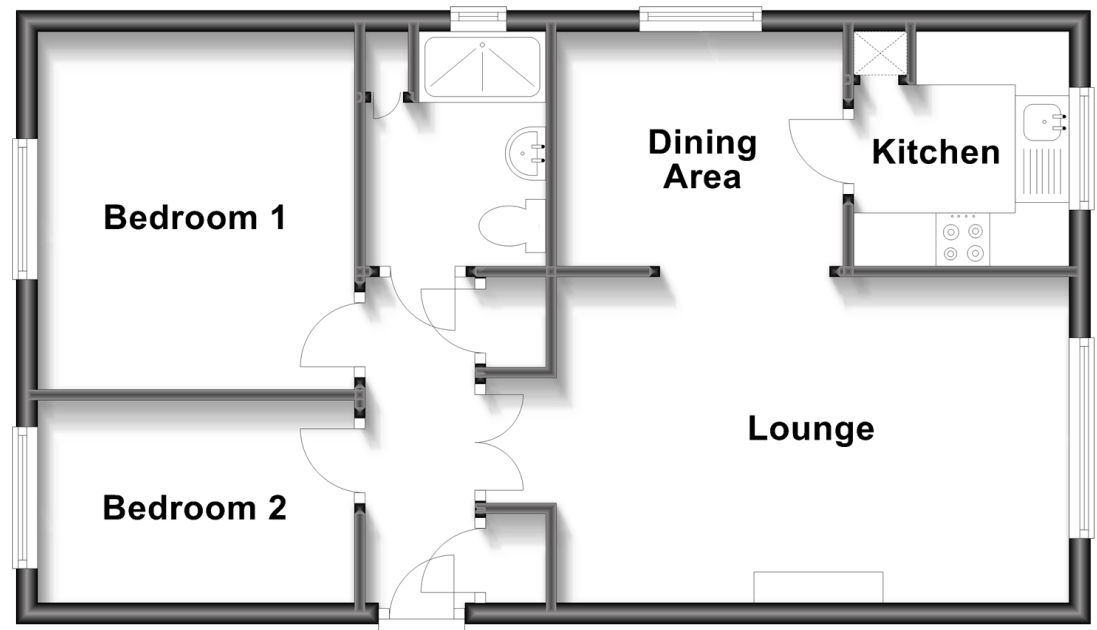
Shower Room

OUTSIDE

Communal Gardens

First Floor

Approx. 51.3 sq. metres (552.2 sq. feet)



Call Chadwell Heath - 020 8597 0043 ■ douglasallen.co.uk

- A private rental licensing scheme applies to some properties in this area, please contact us before proceeding
- Appliances & services are untested, dimensions are approximate and floor plans are not to scale

- Legal advice should be taken to verify fixtures/fittings, planning, alterations and/or lease details
- Through a Homewise Home For Life Plan people aged 60+ can secure this property for up to 59% less, by purchasing a Lifetime Lease.