



**Price**  
**£600,000**

**Freehold**

4x  2x  2x 

**East Road, Chadwell  
Heath, Essex, RM6**

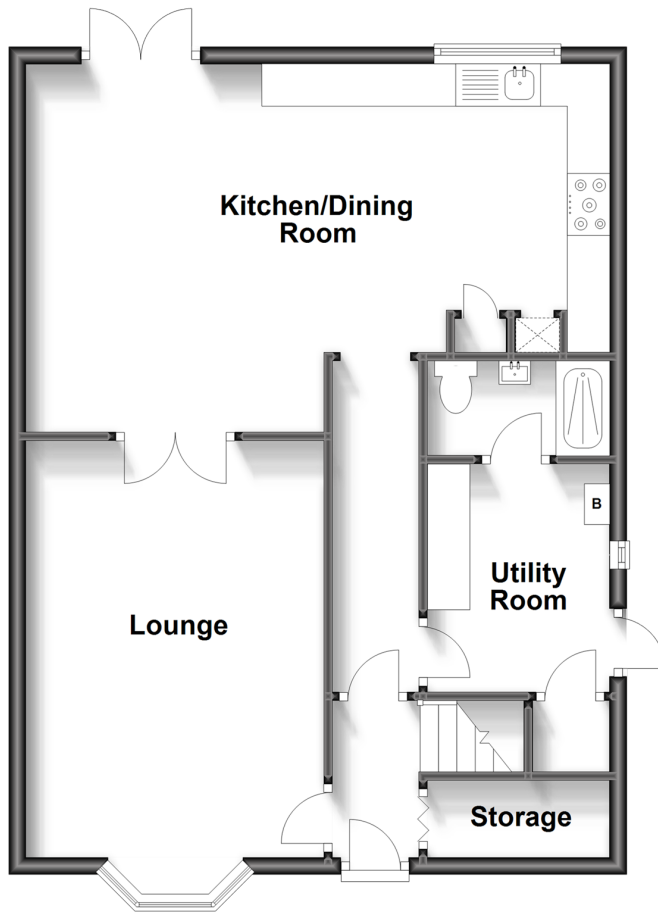
**OVER 60?**

Secure this property  
for up to **59% less!**

 **DOUGLAS  
ALLEN**  
Helping you move forwards

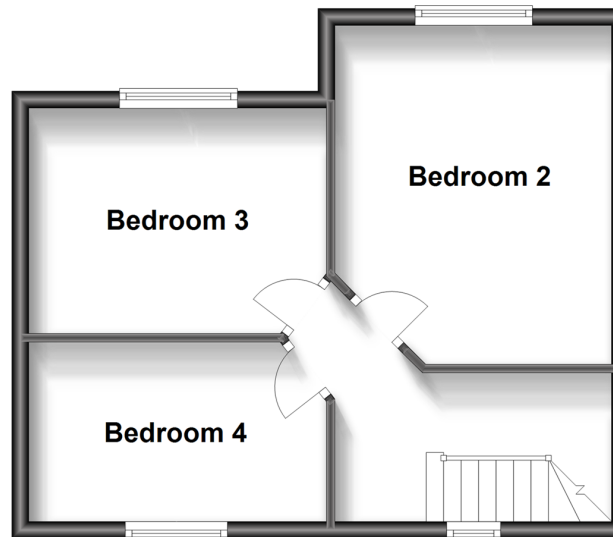
## Ground Floor

Approx. 64.5 sq. metres (694.3 sq. feet)



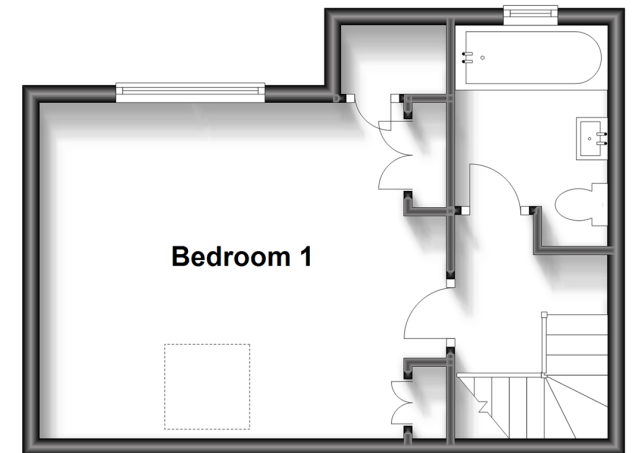
## First Floor

Approx. 36.7 sq. metres (395.4 sq. feet)



## Second Floor

Approx. 29.4 sq. metres (316.4 sq. feet)



## Accommodation

### GROUND FLOOR

Entrance Hall  
Lounge: 16'1 x 11'6 (4.91m x 3.51m)  
Kitchen/Dining Room: 22'7 x 14'3 (6.89m x 4.35m)  
Utility Room: 8'10 x 7'1 (2.69m x 2.16m)  
Shower Room  
Storage

### FIRST FLOOR

Landing  
Bedroom 2: 13'1 x 10'9 (3.99m x 3.28m)  
Bedroom 3: 11'6 x 8'9 (3.51m x 2.67m)  
Bedroom 4: 11'6 x 6'11 (3.51m x 2.11m)

### SECOND FLOOR

Bedroom 1: 15'9 x 13'0 (4.80m x 3.97m)  
Bathroom

### OUTSIDE

Off Street Parking  
Rear Garden  
Outbuilding



## Main features

- Extended semi-detached house with off street parking
- Ground floor shower room & utility room
- Large outbuilding on rear garden
- Ideal family home close to Chadwell Heath station, ideal for commuting
- Bus & road links to Ilford & Romford Town Centres
- Close to local schools & amenities



### Nearest Schools

Primary Schools: Warren Junior School 0.2 miles, St Bede's Catholic Primary 0.4 miles, Marks Gate Junior School 0.6 miles

Secondary Schools: The Warren Comprehensive School



### Transport Information

Train Stations: Chadwell Heath 0.6 miles, Goodmayes 1.3 miles, Seven Kings 1.8 miles

Underground Newbury Park 1.9 miles, Barkingside 2.0 miles



### Address

East Road, Chadwell Heath, Essex, RM6



### Directions

For directions to this property please contact us.





Call Chadwell Heath Branch 020 8597 0043 ■ [douglasallen.co.uk](https://douglasallen.co.uk)



- A private rental licensing scheme applies to some properties in this area, please contact us before proceeding
- Appliances & services are untested, dimensions are approximate and floor plans are not to scale

- Legal advice should be taken to verify fixtures/fittings, planning, alterations and/or lease details
- Through a Homewise Home For Life Plan people aged 60+ can secure this property for up to 59% less, by purchasing a Lifetime Lease.



50710312/20230819/CN/MH