



**Price**

**£280,000**

**Leasehold**

2x  1x  1x 

**Meadway Court,  
Whalebone Lane South,  
Dagenham, Essex, RM8**

**OVER 60?**

Secure this property  
for up to **59% less!**

 **DOUGLAS  
ALLEN**  
Helping you move forwards





## Main features

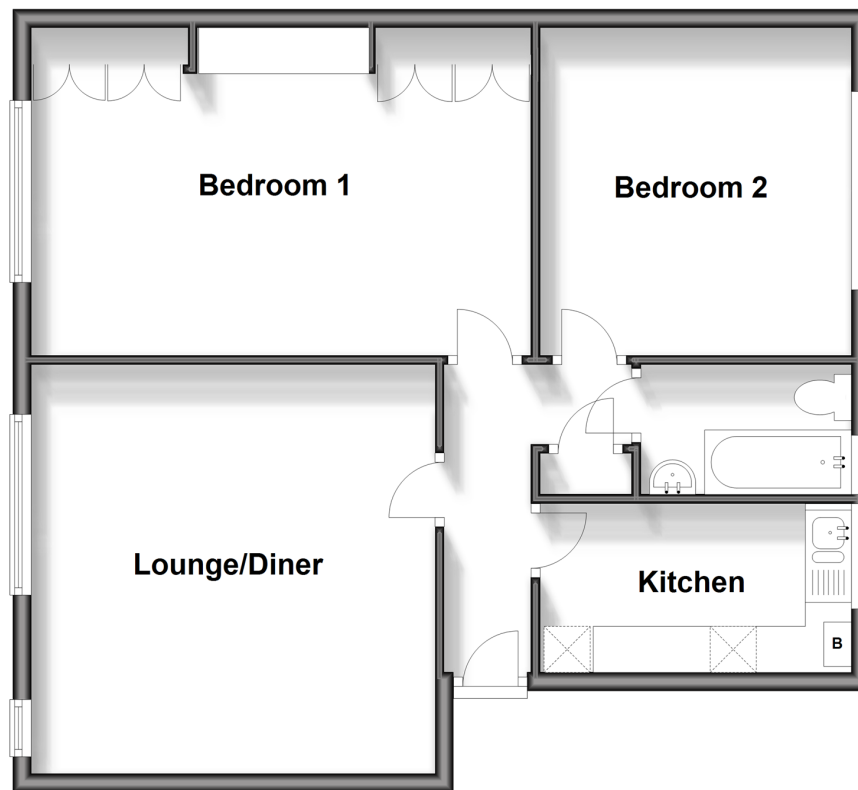
- Spacious second floor purpose built flat with garage en -bloc
- CHAIN FREE
- For sale by Modern Auction T&Cs apply
- Subject to an undisclosed Reserve Price
- Buyers fees apply

**Call Chadwell Heath - 020 8597 0043 ■ [douglasallen.co.uk](http://douglasallen.co.uk)**

- A private rental licensing scheme applies to some properties in this area, please contact us before proceeding
- Appliances & services are untested, dimensions are approximate and floor plans are not to scale

## Second Floor

Approx. 67.1 sq. metres (721.9 sq. feet)



## Accommodation

### SECOND FLOOR

Entrance Hall

Lounge/Diner: 15'11 x 14'3 (4.85m x 4.35m)

Kitchen: 11'2 x 6'1 (3.41m x 1.86m)

Bedroom 1: 17'5 x 11'6 (5.31m x 3.51m)

Bedroom 2: 11'7 x 11'4 (3.53m x 3.46m)

Bathroom

### OUTSIDE

Garage En-Bloc

- Legal advice should be taken to verify fixtures/fittings, planning, alterations and/or lease details
- Through a Homewise Home For Life Plan people aged 60+ can secure this property for up to 59% less, by purchasing a Lifetime Lease.