



**Price**

**£270,000**

**Leasehold**

2x  1x  1x 

**Carew Court, Quarles  
Park Road, Chadwell  
Heath, Essex, RM6**

**OVER 60?**

Secure this property  
for up to **59% less!**



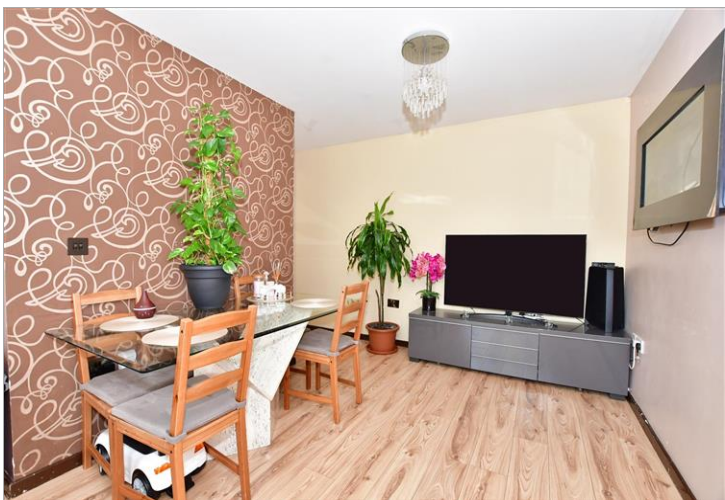
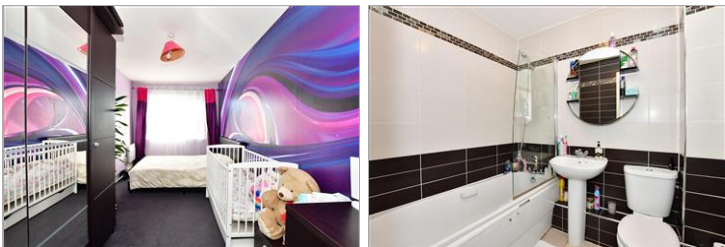
**Video Tour available**



**DOUGLAS  
ALLEN**

Helping you move forwards





## Main features

- A second floor apartment
- Garage en-bloc
- Good road & bus links for Ilford & Romford Town Centres
- Close to Chadwell Heath High Road & station
- Situated in a quiet residential location
- Being sold CHAIN FREE

## Accommodation

### SECOND FLOOR

Entrance Hall

Lounge/Dining/Kitchen Area: 18'0 (5.49m) x 12'2 (3.71m) narrowing to 9'1 at narrowest point (2.77m)

Kitchen: 8'0 x 6'11 (2.44m x 2.11m)

Bedroom 1: 15'9 x 8'2 (4.80m x 2.49m)

Bedroom 2: 13'11 x 5'7 (4.24m x 1.70m)

Bathroom

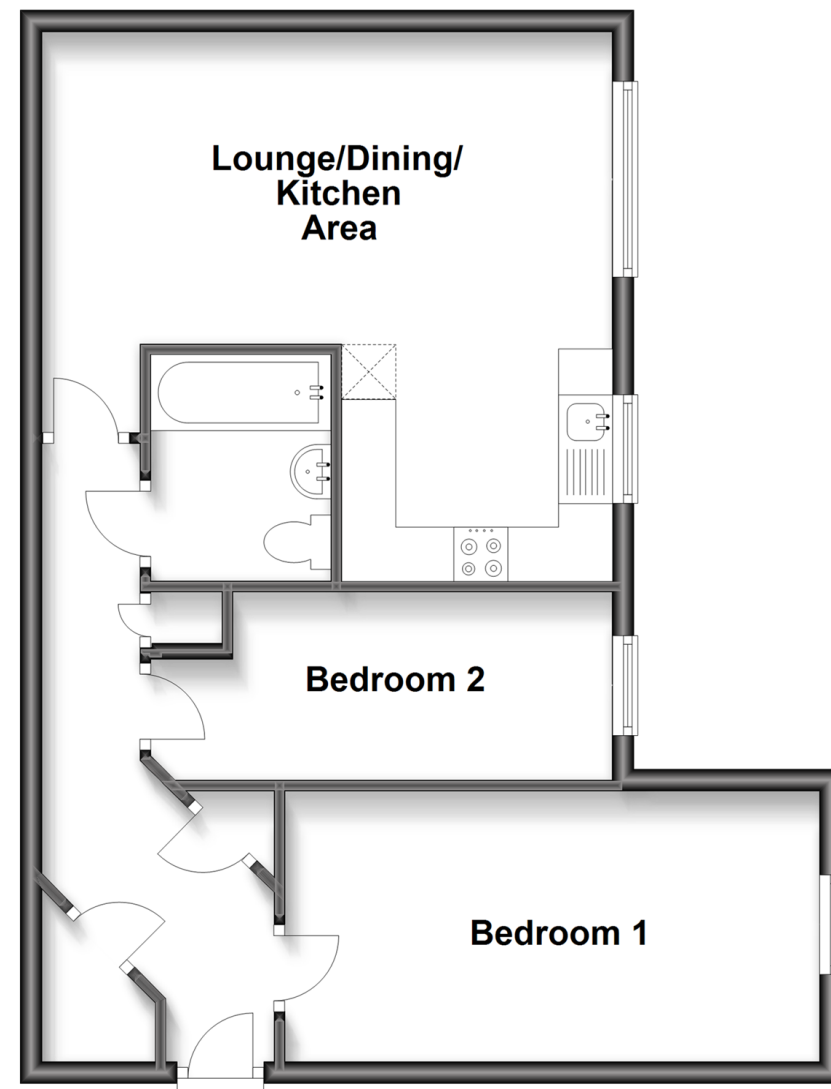
### OUTSIDE

Garage en-bloc

Communal Gardens

## Second Floor

Approx. 54.8 sq. metres (590.1 sq. feet)



**Call Chadwell Heath - 020 8597 0043 ■ [douglasallen.co.uk](http://douglasallen.co.uk)**

- A private rental licensing scheme applies to some properties in this area, please contact us before proceeding
- Legal advice should be taken to verify fixtures/fittings, planning, alterations and/or lease details
- Appliances & services are untested, dimensions are approximate and floor plans are not to scale
- Through a Homewise Home For Life Plan people aged 60+ can secure this property for up to 59% less, by purchasing a Lifetime Lease.



50707192/20230325/CN/MH