



**Price**  
**£500,000**

**Freehold**

4x  2x  2x 

**Woodrush Way,  
Chadwell Heath, Essex,  
RM6**

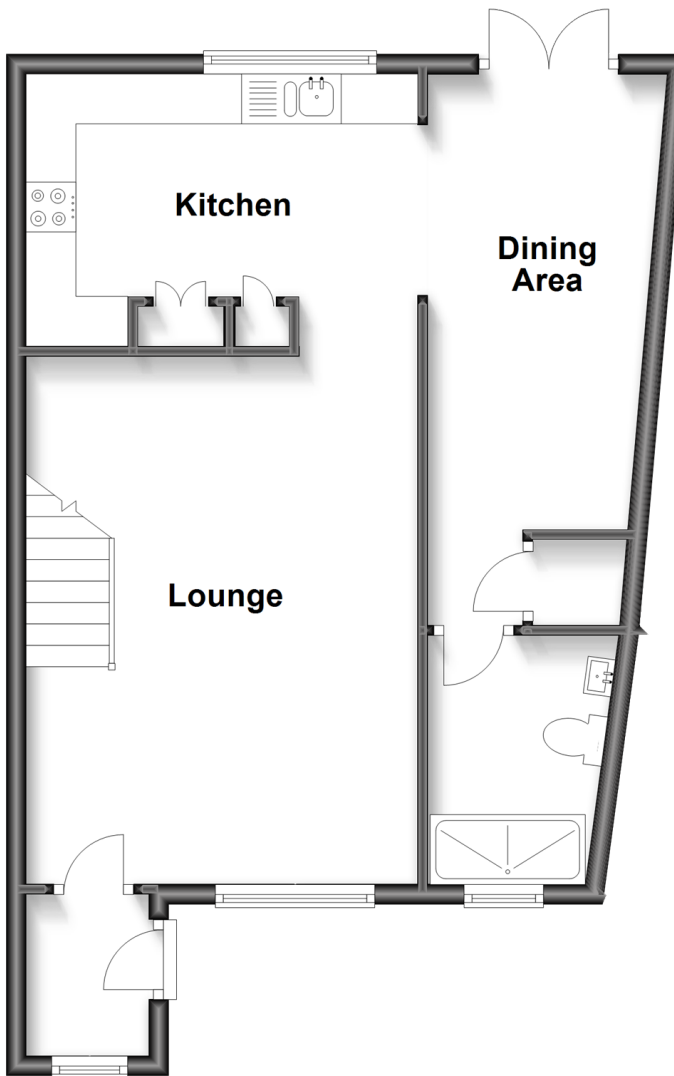
**OVER 60?**

Secure this property  
for up to **59% less!**

 **DOUGLAS  
ALLEN**  
Helping you move forwards

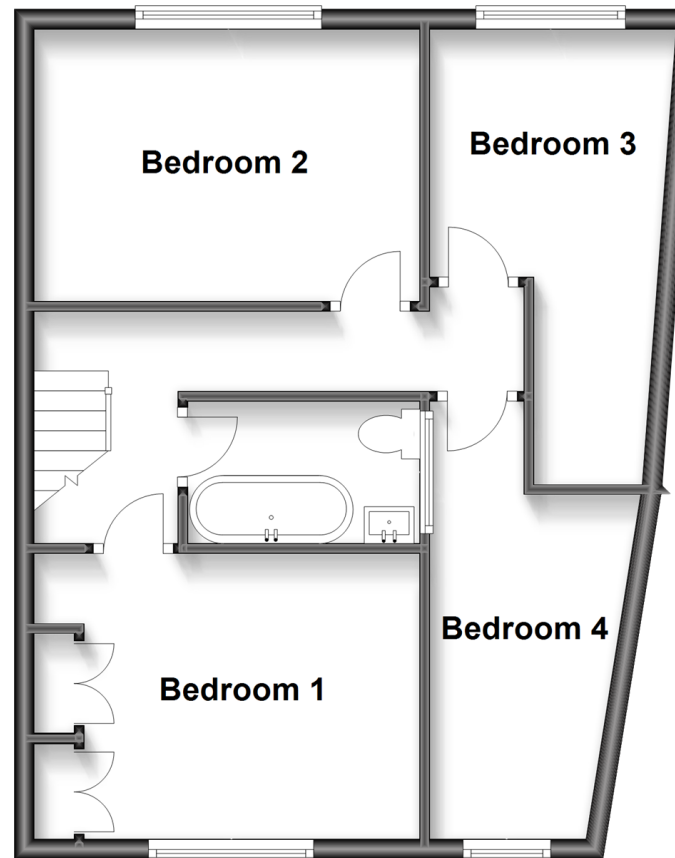
## Ground Floor

Approx. 51.4 sq. metres (553.8 sq. feet)



## First Floor

Approx. 49.4 sq. metres (531.3 sq. feet)



## Accommodation

### GROUND FLOOR

Entrance Porch

Entrance Hall

Lounge: 19'6 x 13'0 (5.95m x 3.97m)

Kitchen: 13'6 x 9'6 (4.12m x 2.90m)

Dining Area: 18'0 x 8'6 (5.49m x 2.59m)

Wet Room

### FIRST FLOOR

Landing

Bedroom 1: 13'0 x 9'5 (3.97m x 2.87m)

Bedroom 2: 12'9 x 9'9 (3.89m x 2.97m)

Bedroom 3: 8'4 x 8'0 (2.54m x 2.44m)

Bedroom 4: 14'6 x 5'6 (4.42m x 1.68m)

Bathroom

### OUTSIDE

Rear Garden

Garage





## Main features

- Beautifully presented end of terrace house
- Low maintenance rear garden & garage to rear
- Modern fitted kitchen with lots of storage & worktop space
- Walk-in wardrobe to third bedroom
- Separate dining area overlooking the low maintenance rear garden
- Ideal purchase for any growing family



### Nearest Schools

Primary Schools: Marks Gate Junior School 0.3 miles, St Bede's Catholic Primary 0.4 miles, Grove Primary 0.4 miles

Secondary Schools: Little Heath School 0.5 miles, The Warren Comprehensive School 0.6 miles



### Transport Information

Train Stations: Chadwell Heath 1.0 miles, Goodmayes 1.4 miles, Seven Kings 1.9 miles

Underground Barkingside 1.6 miles, Newbury Park 1.7 miles, Fairlop 1.9 miles



### Address

Woodrush Way, Chadwell Heath, Essex, RM6



### Directions

For directions to this property please contact us.



