



Price
£475,000

Freehold

4x  1x  1x 

**East Park Close,
Chadwell Heath, Essex,
RM6**

OVER 60?

Secure this property
for up to **59% less!**

 **DOUGLAS
ALLEN**
Helping you move forwards



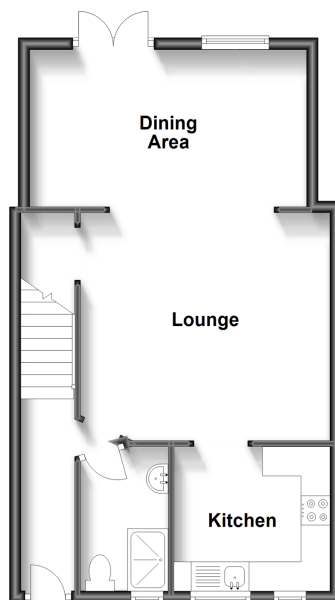
Main features

- End of terrace house with large driveway
- Open plan living areas with patio doors overlooking rear garden
- Separate Annexe to rear
- Close to good road & bus links to Chadwell Heath station
- Schools & places of worship nearby

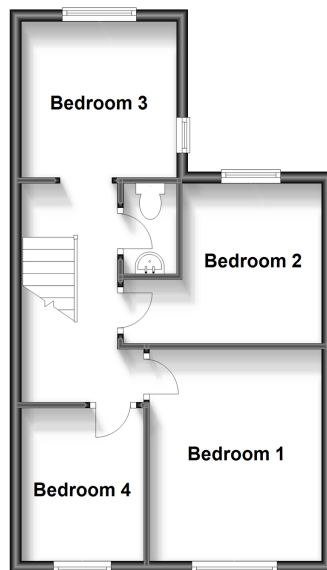
Call Chadwell Heath - 020 8597 0043 ■ douglasallen.co.uk

- A private rental licensing scheme applies to some properties in this area, please contact us before proceeding
- Appliances & services are untested, dimensions are approximate and floor plans are not to scale

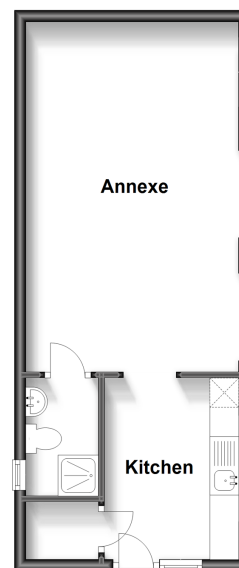
Ground Floor
Approx. 47.9 sq. metres (516.0 sq. feet)



First Floor
Approx. 41.0 sq. metres (441.6 sq. feet)



Annexe
Approx. 34.0 sq. metres (365.5 sq. feet)



Accommodation

GROUND FLOOR

Entrance Hall

Lounge Area: 12'7 x 8'8 (3.84m x 2.64m)

Dining Area: 15'8 x 8'8 (4.78m x 2.64m)

Kitchen: 8'3 x 7'8 (2.52m x 2.34m)

Shower Room

FIRST FLOOR

Landing

Bedroom 1: 11'8 x 10'4 (3.56m x 3.15m)

Bedroom 2: 11'4 x 9'0 (3.46m x 2.75m)

Bedroom 3: 8'4 x 6'11 (2.54m x 2.11m)

Bedroom 4: 9'3 x 8'7 (2.82m x 2.62m)

Cloakroom

OUTSIDE

Rear Garden

Off Street Parking

ANNEXE

Annexe

Kitchen

Shower Room



50703228/20240224/CN/MH

- Legal advice should be taken to verify fixtures/fittings, planning, alterations and/or lease details
- Through a Homewise Home For Life Plan people aged 60+ can secure this property for up to 59% less, by purchasing a Lifetime Lease.