



Price
£280,000

Freehold

1x  1x  1x 

**Little Dytchleys Mews,
Coxtie Green Road,
Pilgrims Hatch,
Brentwood, Essex, CM14**

 **DOUGLAS
ALLEN**
Helping you move forwards



Main features

- Offered with no onward chain
- Under floor heating in the modern kitchen and bright lounge/diner
- Generous bedroom and larger than average bathroom
- Situated in beautiful grounds and siding onto Brentwood Golf Club
- Residents parking

Accommodation

GROUND FLOOR

Porch

Lounge/Diner: 17'9 x 10'9 (5.41m x 3.28m)

Kitchen: 9'2 x 7'9 (2.80m x 2.36m)

FIRST FLOOR

Bedroom: 20'8 x 10'7 (6.30m x 3.23m)

Bathroom: 10'7 x 7'8 (3.23m x 2.34m)

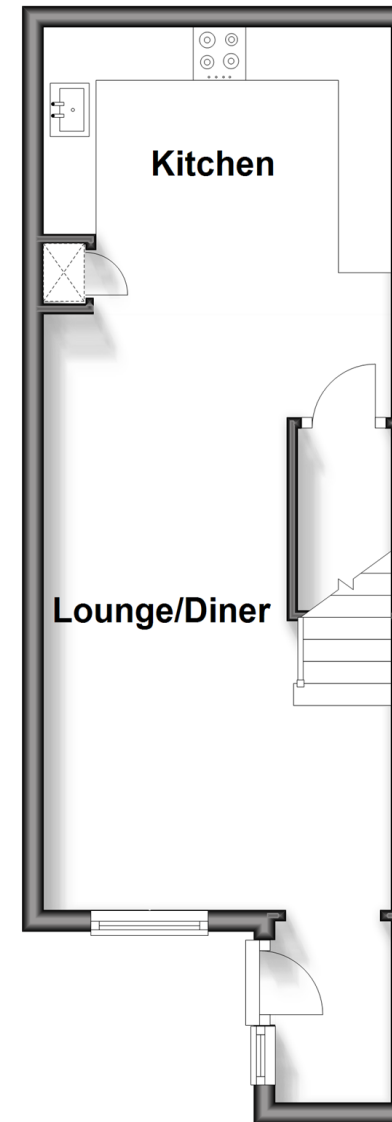
OUTSIDE

Residents Parking

Communal Gardens

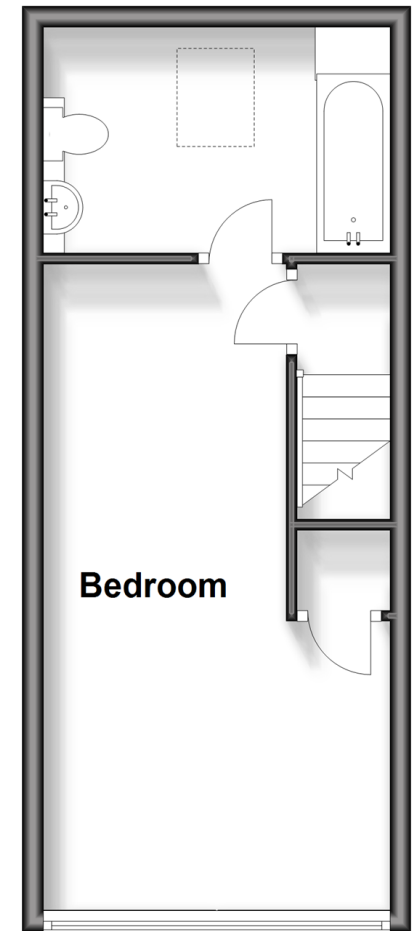
Ground Floor

Approx. 29.4 sq. metres (316.2 sq. feet)



First Floor

Approx. 27.4 sq. metres (294.9 sq. feet)



Call Brentwood - 01277 218525 ■ douglasallen.co.uk

- If buying to let, the energy rating will need to be improved to at least 'E' rating before you can let the property
- Legal advice should be taken to verify fixtures/fittings, planning, alterations and/or lease details
- Appliances & services are untested, dimensions are approximate and floor plans are not to scale



50603027/20240328/RP/AA