



Price
£700,000

Freehold

3x  1x  1x 

**Weald Close,
Brentwood, Essex, CM14**

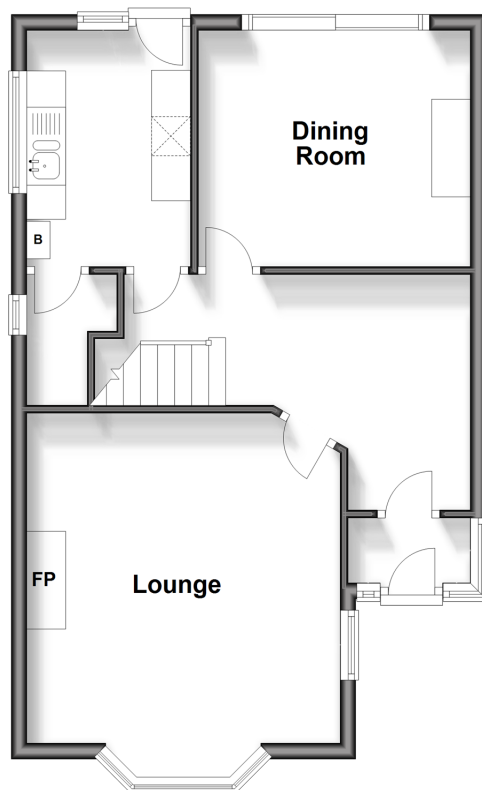
OVER 60?

Secure this property
for up to **59% less!**

 **DOUGLAS
ALLEN**
Helping you move forwards

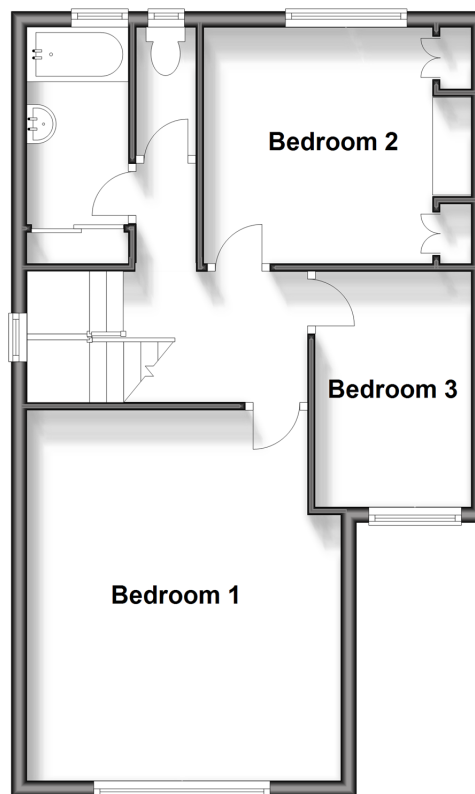
Ground Floor

Approx. 49.0 sq. metres (527.3 sq. feet)



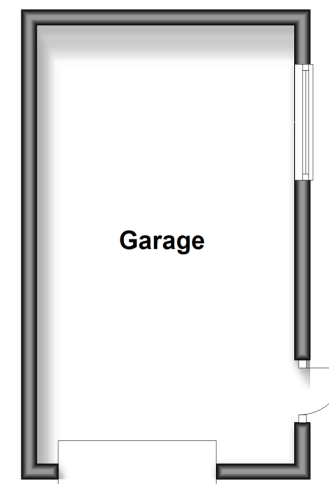
First Floor

Approx. 49.3 sq. metres (530.1 sq. feet)



Outbuilding

Approx. 18.6 sq. metres (200.4 sq. feet)



Accommodation

GROUND FLOOR

Hallway

Lounge: 13'8 x 13'2 (4.17m x 4.02m)

Kitchen: 9'8 x 7'0 (2.95m x 2.14m)

Dining Room: 10'3 x 9'8 (3.13m x 2.95m)

FIRST FLOOR

Landing

Bedroom 1: 13'7 x 11'3 (4.14m x 3.43m) narrowing to 11'8 x 4'3 (3.56m x 1.30m)

Bedroom 2: 10'1 into fitted wardrobes x 9'9 (3.08m x 2.97m)

Bedroom 3: 9'9 x 6'6 (2.97m x 1.98m)

Separate Bathroom

Separate Toilet

OUTBUILDING

Garage

OUTSIDE

Front and Rear Gardens

Off Street Parking



Main features

- Spacious semi-detached home in need of modernisation
- Offered with no onward chain
- Excellent opportunity to create your dream home
- Beautiful rear garden
- Garage and off road parking
- Within walking distance of the station, schools and high street
- Located in a popular close off of Honeypot Lane



Nearest Schools

Primary Schools: Holly Trees Primary 0.4 miles, St Peter's C of E Voluntary Aided Primary, South Weald 0.8 miles, St Thomas of Canterbury C of E Aided Junior School, Brentwood 0.9 miles



Transport Information

Train Stations: Brentwood 0.6 miles, Shenfield 1.9 miles, West Horndon 4.0 miles



Address

Weald Close, Brentwood, Essex, CM14



Directions

For directions to this property please contact us.



Call Brentwood Branch 01277 218525 ■ douglasallen.co.uk



- Legal advice should be taken to verify fixtures/fittings, planning, alterations and/or lease details
- Appliances & services are untested, dimensions are approximate and floor plans are not to scale
- Through a Homewise Home For Life Plan people aged 60+ can secure this property for up to 59% less, by purchasing a Lifetime Lease.



50603015/20240418/RP/BH