



OVER 60?

Secure this property
for up to **59% less!**

Price

£200,000

Leasehold

1x  1x  1x 

**Regent House, Hubert
Road, Brentwood,
Essex, CM14**



**DOUGLAS
ALLEN**

Helping you move forwards



Seventh Floor

Approx. 35.5 sq. metres (381.8 sq. feet)

Main features

- **1 bedroom seventh floor modern apartment with long lease**
- **Viewing highly recommended with fantastic views across London and Canary Wharf**
- **Ready to move in to and includes a concierge service**
- **Modern kitchen with Quartz worktops**
- **Allocated parking**
- **Integrated fridge/freezer and washer/dryer**

Accommodation

SEVENTH FLOOR

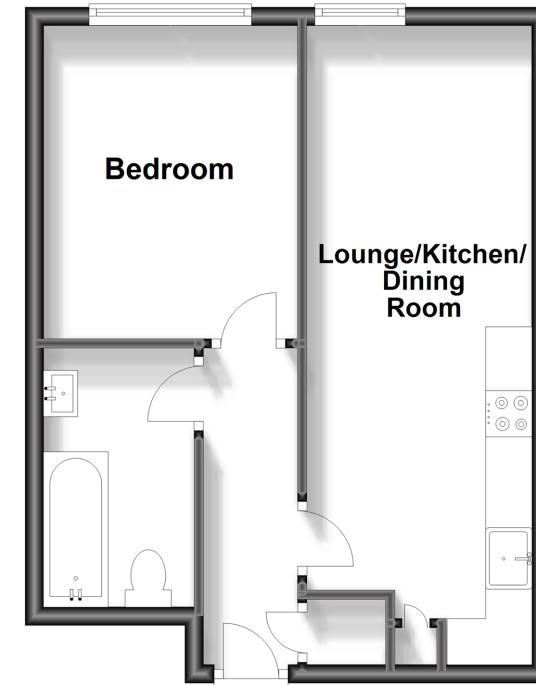
Open Plan Kitchen/Lounge: 17'6 x 7'10 (5.34m x 2.39m)

Bedroom : 11'1 x 8'10 (3.38m x 2.69m)

Bathroom: 7'8 x 5'2 (2.34m x 1.58m)

OUTSIDE

Allocated Parking



Call Brentwood - 01277 218525 ■ douglasallen.co.uk

■ Legal advice should be taken to verify fixtures/fittings, planning, alterations and/or lease details
 ■ Through a Homewise Home For Life Plan people aged 60+ can secure this property for up to 59% less, by purchasing a Lifetime Lease.

■ Appliances & services are untested, dimensions are approximate and floor plans are not to scale



50602972/20231023/CB/AY