



Price
£750,000

Freehold

4x  1x  2x 

**Shenfield Place,
Shenfield, Brentwood,
Essex, CM15**

OVER 60?

Secure this property
for up to **59% less!**

 **DOUGLAS
ALLEN**
Helping you move forwards



Main features

- Large detached house positioned in a cul-de-sac location
- Spacious lounge/diner plus conservatory and study
- Ground floor cloakroom
- Double length garage and driveway
- Within catchment of good schools

Accommodation

GROUND FLOOR

Hallway

Lounge/Diner: 26'5 x 13'11 (8.06m x 4.24m)

Kitchen: 15'7 x 14'4 (4.75m x 4.37m)

Study: 10'8 x 8'5 (3.25m x 2.57m)

Conservatory: 10'2 x 4'10 (3.10m x 1.47m)

Cloakroom: 12'12 x 3'11 (3.96m x 1.19m)

FIRST FLOOR

Landing

Bedroom 1: 15'9 x 14'8 (4.80m x 4.47m)

Bedroom 2: 15'9 x 14'8 (4.80m x 4.47m)

Bedroom 3: 15'8 x 9'8 (4.78m x 2.95m)

Bedroom 4: 16'8 x 9'0 (5.08m x 2.75m)

Bathroom

OUTSIDE

Front and Rear Gardens

Garage

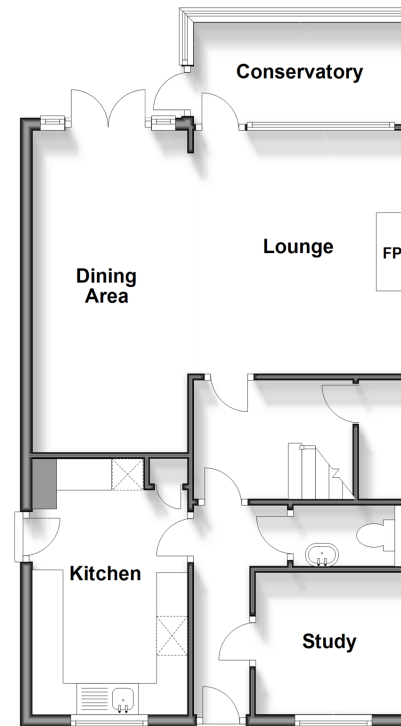
Off Street Parking

Call Brentwood - 01277 218525 ■ douglasallen.co.uk

- Legal advice should be taken to verify fixtures/fittings, planning, alterations and/or lease details
- Appliances & services are untested, dimensions are approximate and floor plans are not to scale
- Through a Homewise Home For Life Plan people aged 60+ can secure this property for up to 59% less, by purchasing a Lifetime Lease.

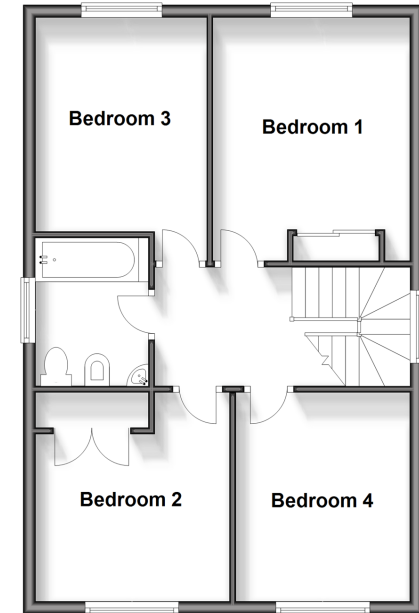
Ground Floor

Approx. 62.8 sq. metres (676.0 sq. feet)



First Floor

Approx. 56.8 sq. metres (611.5 sq. feet)



50602967/20240321/FL/AA