



**Price**  
**£775,000**  
**Freehold**

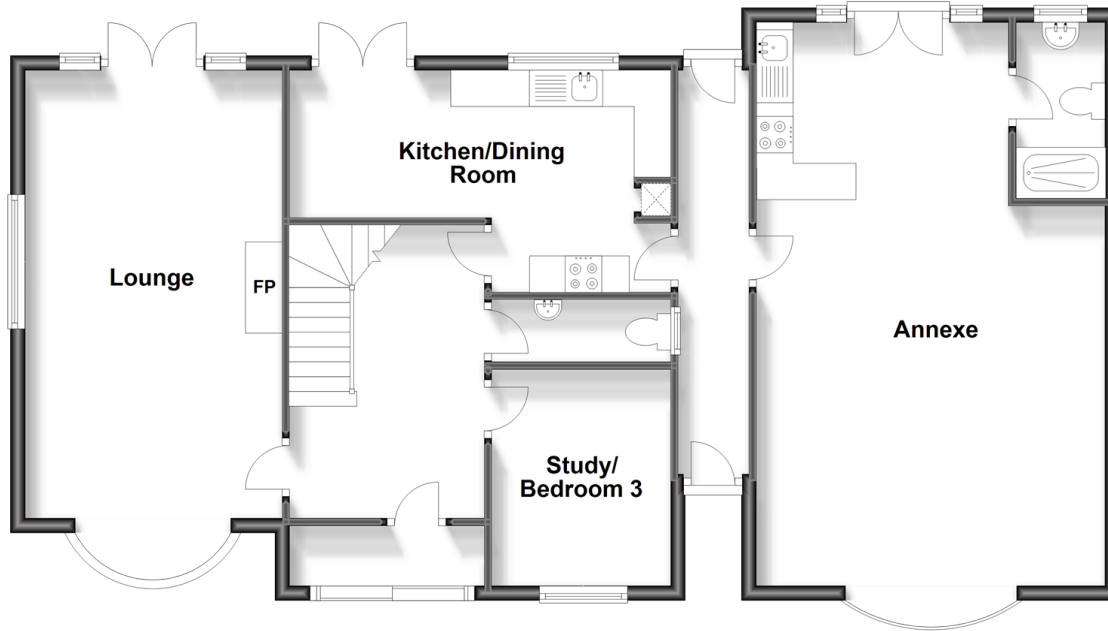
3x  1x  2x 

Meadsway, Great Warley, Brentwood,  
Essex, CM13

 **DOUGLAS  
ALLEN**  
Helping you move forwards

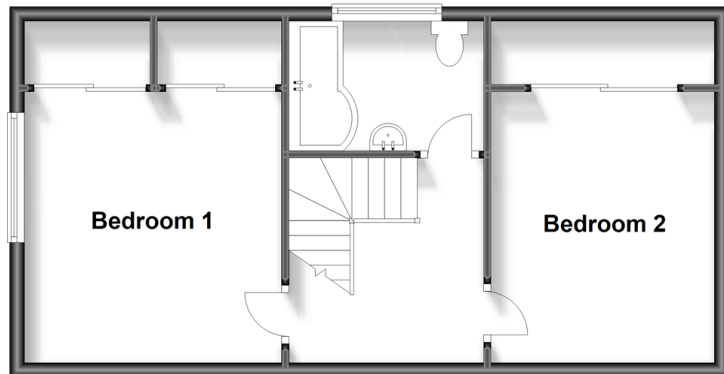
## Ground Floor

Approx. 103.0 sq. metres (1108.6 sq. feet)



## First Floor

Approx. 44.2 sq. metres (475.3 sq. feet)



## Accommodation

### GROUND FLOOR

Porch

Hallway

Lounge: 20'1 x 11'7 (6.13m x 3.53m)

Kitchen/Diner: 18'10 x 10'0 (5.74m x 3.05m)

Study/Bedroom 3: 9'10 x 8'7 (3.00m x 2.62m)

Cloakroom

### FIRST FLOOR

Landing

Bedroom 1: 11'8 x 11'7 (3.56m x 3.53m)

Bedroom 2: 11'8 x 9'10 (3.56m x 3.00m)

Bathroom

### ANNEXE

Annexe Living Area: 23'5 x 15'6 (7.14m x 4.73m)

Annexe Shower Room: 7'5 x 5'3 (2.26m x 1.60m)

### OUTSIDE

Rear Garden

Off Street Parking





## Main features

- 3 bedroom detached chalet house plus self contained studio annexe
- Stunning rear garden
- Off street parking for multiple vehicles
- Ground floor cloakroom plus family bathroom
- Corner plot location
- Within 1 mile of Brentwood railway station, high street and within catchment of good schools



### Nearest Schools

Primary Schools: Warley Primary 0.3 miles, Holly Trees Primary 0.6 miles, Hogarth Primary 1.4 miles

Secondary Schools: Brentwood County High School 1.1 miles, Brentwood Ursuline Convent High School 1.2 miles,



### Transport Information

Train Stations: Brentwood 0.9 miles, Shenfield 2.4 miles, West Horndon 3.0 miles



### Address

Meadway, Great Warley, Brentwood, Essex, CM13



### Directions

For directions to this property please contact us.





Call Brentwood Branch 01277 218525 ■ [douglasallen.co.uk](https://douglasallen.co.uk)



■ Legal advice should be taken to verify fixtures/fittings, planning, alterations and/or lease details ■ Appliances & services are untested, dimensions are approximate and floor plans are not to scale



50602954/20230901/AY/AY