



**Price**  
**£400,000**

**Freehold**

2x  1x  1x 

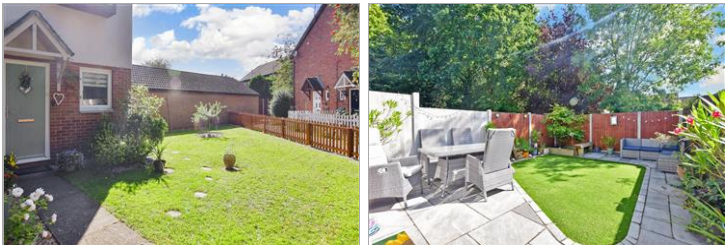
**Mosbach Gardens,  
Hutton, Brentwood,  
Essex, CM13**

**OVER 60?**

Secure this property  
for up to **59% less!**

 **DOUGLAS  
ALLEN**  
Helping you move forwards





## Main features

- 2 bedroom modern end of terrace house on a large corner plot
- Garage and 2 allocated parking spaces
- New kitchen and bathroom
- Quiet cul-de-sac location
- 1.5 miles from Shenfield station

## Accommodation

### GROUND FLOOR

Entrance Hallway

Lounge: 13'7 x 11'9 (4.14m x 3.58m)

Kitchen: 10'8 x 5'9 (3.25m x 1.75m)

Conservatory Area: 10'4 x 9'5 (3.15m x 2.87m)

### FIRST FLOOR

Landing

Bedroom 1: 11'9 x 8'9 (3.58m x 2.67m)

Bedroom 2: 9'2 x 8'8 (2.80m x 2.64m)

Bathroom: 6'1 x 5'6 (1.86m x 1.68m)

### OUTSIDE

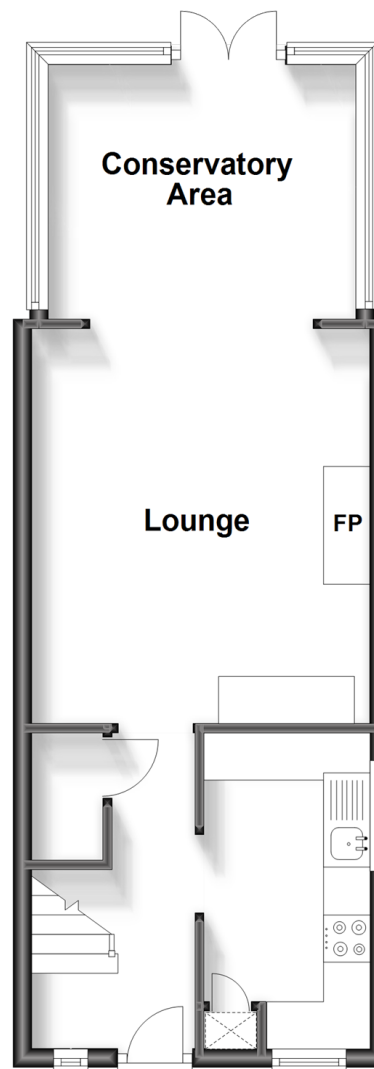
Front and Rear Gardens

Garage

2 Allocated Parking Space

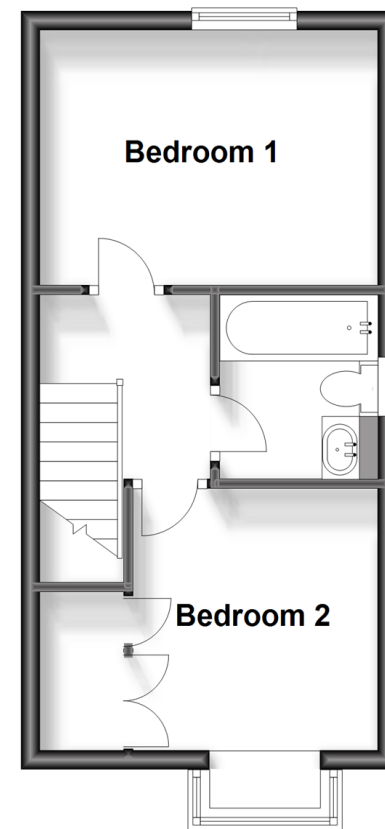
## Ground Floor

Approx. 27.8 sq. metres (299.0 sq. feet)



## First Floor

Approx. 28.1 sq. metres (302.8 sq. feet)



**Call Brentwood - 01277 218525 ■ [douglasallen.co.uk](http://douglasallen.co.uk)**

- Legal advice should be taken to verify fixtures/fittings, planning, alterations and/or lease details
- Appliances & services are untested, dimensions are approximate and floor plans are not to scale
- Through a Homewise Home For Life Plan people aged 60+ can secure this property for up to 59% less, by purchasing a Lifetime Lease.



50602920/20231009/RP/CB