



**Price**

**£300,000**

**Leasehold**

2x  2x  1x 

**Adlington House,  
Brentwood, Essex, CM14**

**OVER 60?**

Secure this property  
for up to **59% less!**

 **DOUGLAS  
ALLEN**  
Helping you move forwards



## Main features

- 2 bedroom ground floor apartment
- Ideal first time buy or investment purchase
- Within walking distance to Brentwood Station
- Allocated parking
- Easy reach of Brentwood High Street
- Situated in a very popular area of Brentwood

## Accommodation

### GROUND FLOOR

Lounge/Kitchen/Diner: 29'1 x 14'6 (8.87m x 4.42m)

Bedroom 1: 16'8 x 16'2 (5.08m x 4.93m)

En-Suite Shower Room

Bedroom 2: 18'10 x 8'6 (5.74m x 2.59m)

Bathroom: 12'6 x 8'9 (3.81m x 2.67m)

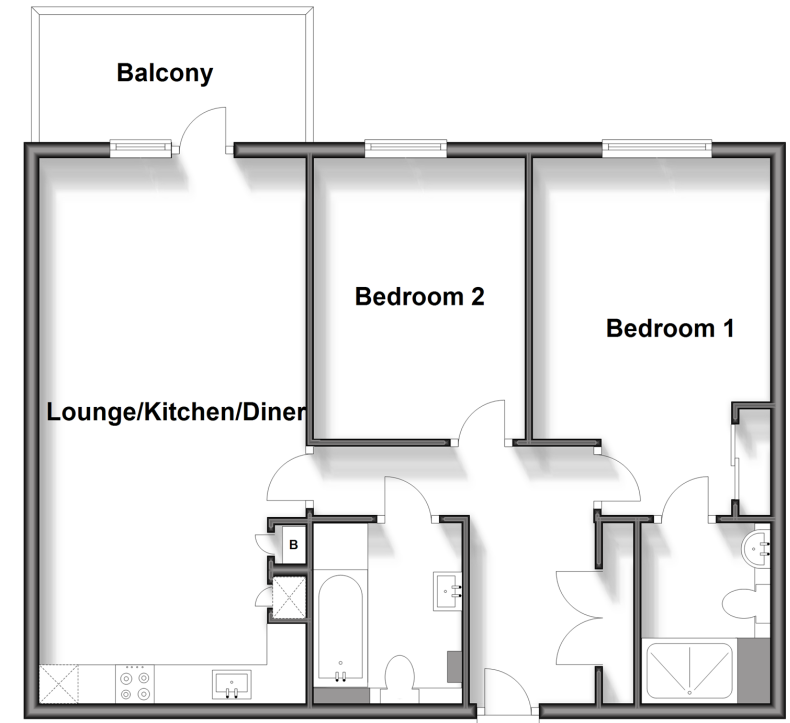
### BALCONY

### OUTSIDE

Allocated Parking  
Communal Garden

### Ground Floor

Approx. 66.3 sq. metres (713.2 sq. feet)



**Call Brentwood - 01277 218525 ■ [douglasallen.co.uk](http://douglasallen.co.uk)**

- Legal advice should be taken to verify fixtures/fittings, planning, alterations and/or lease details
- Appliances & services are untested, dimensions are approximate and floor plans are not to scale
- Through a Homewise Home For Life Plan people aged 60+ can secure this property for up to 59% less, by purchasing a Lifetime Lease.



50602848/20240213/RP/AA