



**Price**

**£140,000**

**Leasehold**

1x  1x  1x 

**Queenswood House,  
Eastfield Road,  
Brentwood, Essex, CM14**

**OVER 60?**

Secure this property  
for up to **59% less!**

 **DOUGLAS  
ALLEN**  
Helping you move forwards





## Main features

- Popular central Brentwood located retirement apartment
- Offered chain free a first floor apartment which must be seen
- Well cared for communal gardens
- Secure residents parking
- Close to Brentwood train station and High Street
- Communal facilities include communal lounge, security call system and lifts
- Social manager who arranges varied social events for all residents.

## Accommodation

### GROUND FLOOR

Lift

### FIRST FLOOR

Entrance Hall

Lounge: 16'5 x 10'7 (5.01m x 3.23m)

Kitchen: 8'2 x 8'0 (2.49m x 2.44m)

Bedroom: 11'9 x 9'9 (3.58m x 2.97m)

Bathroom

### COMMUNAL FACILITIES

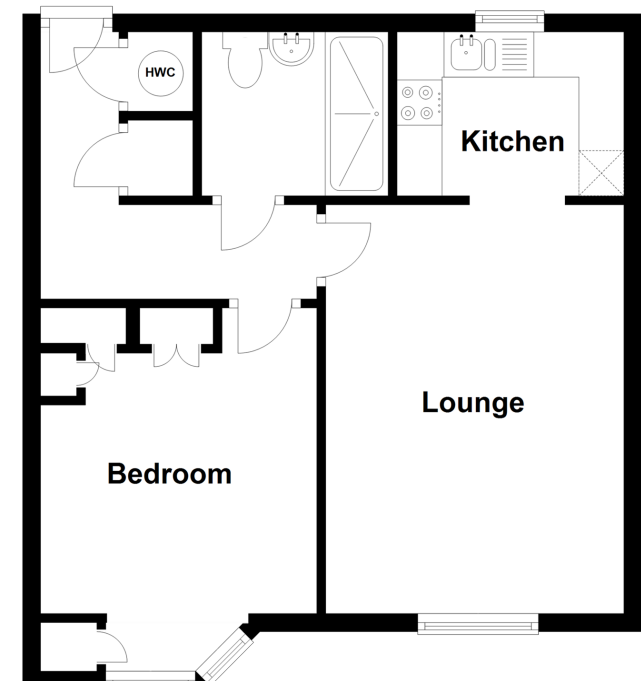
Communal Lounge

Resident Parking

Communal Gardens

## First Floor

Approx. 43.0 sq. metres (463.3 sq. feet)



**Call Brentwood - 01277 218525 ■ [douglasallen.co.uk](http://douglasallen.co.uk)**

■ Legal advice should be taken to verify fixtures/fittings, planning, alterations and/or lease details  
 ■ Through a Homewise Home For Life Plan people aged 60+ can secure this property for up to 59% less, by purchasing a Lifetime Lease.

■ Appliances & services are untested, dimensions are approximate and floor plans are not to scale



50602815/20230315/TF/DP