



Price
£120,000

Leasehold

1x  1x  1x 

**Primrose Court, Kings
Road, Brentwood,
Essex, CM14**

OVER 60?

Secure this property
for up to **59% less!**

 **DOUGLAS
ALLEN**
Helping you move forwards



Main features

- Over 55's retirement flat in modern block
- Lower ground floor location overlooking the well kept communal gardens
- Refitted modern shower room with double shower enclosure
- Parking and visitors permits
- Communal Lounge and laundry room

Accommodation

GROUND FLOOR

Entrance Hall

Lounge/diner: 17'8 x 9'3 (5.39m x 2.82m)

Kitchen: 7'8 x 6'4 (2.34m x 1.93m)

Bedroom: 14'3 x 10'0 (4.35m x 3.05m)

Shower Room: 7'2 x 5'2 (2.19m x 1.58m)

COMMUNAL FACILITIES

Communal Lounge

Communal Laundry Room

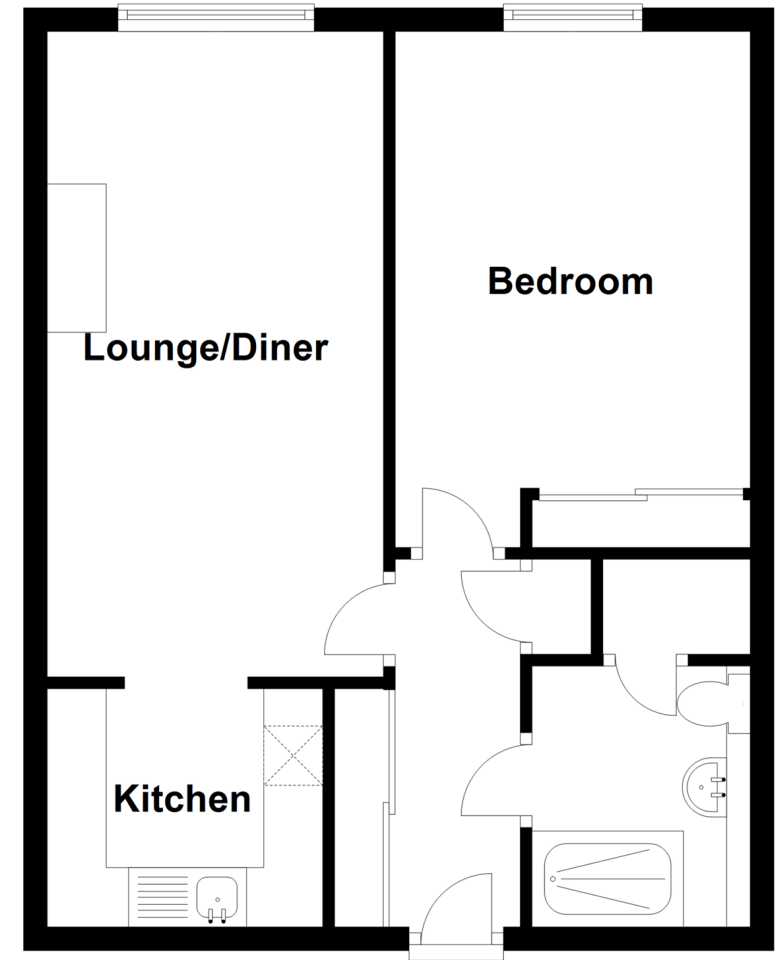
OUTSIDE

Communal Gardens

Parking Space

Ground Floor

Approx. 45.0 sq. metres (484.2 sq. feet)



Call Brentwood - 01277 218525 ■ douglasallen.co.uk

- Legal advice should be taken to verify fixtures/fittings, planning, alterations and/or lease details
- Appliances & services are untested, dimensions are approximate and floor plans are not to scale
- Through a Homewise Home For Life Plan people aged 60+ can secure this property for up to 59% less, by purchasing a Lifetime Lease.



50602755/20220926/EM/DP