



Guide Price
£300,000

Freehold

2x  1x  1x 

**Mapleford Sweep,
Basildon, Essex, SS16**

OVER 60?

Secure this property
for up to **59% less!**

 **DOUGLAS
ALLEN**
Helping you move forwards



Main features

- 2 double bedroom terraced house
- Extra large rear garden
- Close distance to Basildon town centre and mainline station into London Fenchurch Street
- On street parking
- Conservatory

Accommodation

GROUND FLOOR

Entrance Hallway
 Kitchen/Diner: 13'4 x 11'9 (4.07m x 3.58m)
 Lounge: 18'7 x 11'2 (5.67m x 3.41m)
 Conservatory : 10'0 x 9'0 (3.05m x 2.75m)

FIRST FLOOR

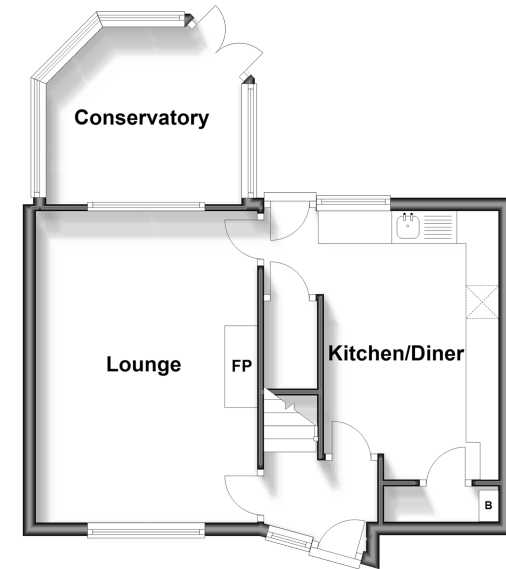
Landing
 Bedroom 1: 11'8 x 10'9 (3.56m x 3.28m)
 Bedroom 2: 15'7 x 8'9 (4.75m x 2.67m)
 Bathroom

OUTSIDE

Front Garden
 Rear Garden

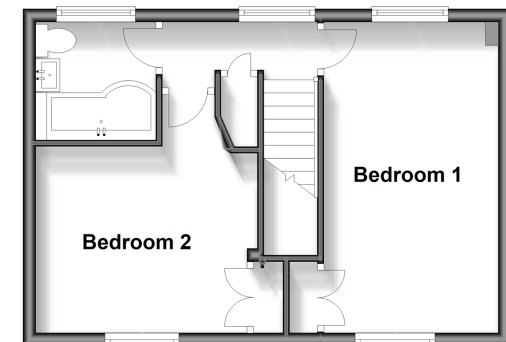
Ground Floor

Approx. 42.0 sq. metres (452.1 sq. feet)



First Floor

Approx. 33.9 sq. metres (364.6 sq. feet)



Call Basildon - 01268 293993 ■ douglasallen.co.uk

- Legal advice should be taken to verify fixtures/fittings, planning, alterations and/or lease details
- Appliances & services are untested, dimensions are approximate and floor plans are not to scale
- Through a Homewise Home For Life Plan people aged 60+ can secure this property for up to 59% less, by purchasing a Lifetime Lease.



50508924/20240501/PM/GW