



**Price**  
**£300,000**

**Freehold**

3x  1x  1x 

**Horsley Cross, Basildon,  
Essex, SS14**

**OVER 60?**

Secure this property  
for up to **59% less!**

 **DOUGLAS  
ALLEN**  
Helping you move forwards





## Main features

- **3 bedroom well presented mid terraced property**
- **Close to Basildon town centre and mainline train station into London Fenchurch Street**
- **Solar PV panels**
- **Economical underfloor heating in kitchen and lounge**
- **South facing landscaped rear garden**

## Accommodation

### GROUND FLOOR

Entrance Hallway

Kitchen: 17'6 x 10'7 (5.34m x 3.23m)

Lounge/Dining Room : 13'6 x 11'6 (4.12m x 3.51m)

### FIRST FLOOR

Landing

Bedroom 1: 11'4 x 10'0 (3.46m x 3.05m)

Bedroom 2: 9'6 x 8'7 (2.90m x 2.62m)

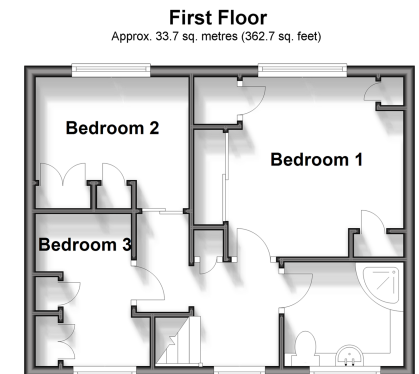
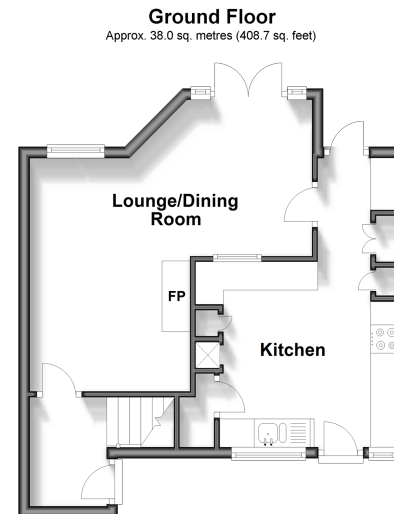
Bedroom 3: 9'5 x 7'3 (2.87m x 2.21m)

Shower Room

### OUTSIDE

Landscaped Rear Garden

Front Garden



**Call Basildon - 01268 293993 ■ [douglasallen.co.uk](http://douglasallen.co.uk)**

■ Legal advice should be taken to verify fixtures/fittings, planning, alterations and/or lease details  
 ■ Through a Homewise Home For Life Plan people aged 60+ can secure this property for up to 59% less, by purchasing a Lifetime Lease.

■ Appliances & services are untested, dimensions are approximate and floor plans are not to scale