



**Price**

**£190,000**

**Leasehold**

1x  1x  1x 

**Box Close, Laindon,  
Basildon, Essex, SS15**

**OVER 60?**

Secure this property  
for up to **59% less!**

 **DOUGLAS  
ALLEN**  
Helping you move forwards





## Main features

- 1 bedroom second floor apartment
- Modern decor throughout
- Generous size lounge and separate kitchen with integrated fridge freezer
- 1 x allocated parking space
- Perfect for first time buyers or investors

## Accommodation

### SECOND FLOOR

Hallway

Lounge: 14'6 x 12'9 (4.42m x 3.89m)

Kitchen: 9'9 x 8'1 (2.97m x 2.47m)

Bedroom : 13'10 x 11'8 (4.22m x 3.56m)

Bathroom: 6'6 x 6'5 (1.98m x 1.96m)

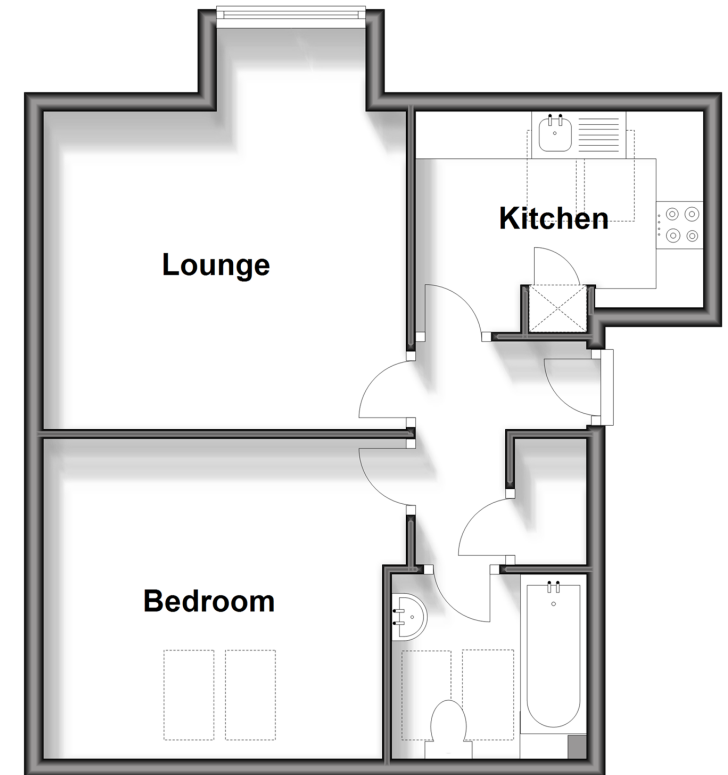
### OUTSIDE

Allocated Parking

Communal Garden

## Second Floor

Approx. 43.2 sq. metres (465.0 sq. feet)



**Call Billericay - 01277 631377 ■ [douglasallen.co.uk](http://douglasallen.co.uk)**

- Legal advice should be taken to verify fixtures/fittings, planning, alterations and/or lease details
- Appliances & services are untested, dimensions are approximate and floor plans are not to scale
- Through a Homewise Home For Life Plan people aged 60+ can secure this property for up to 59% less, by purchasing a Lifetime Lease.



50508866/20240410/FL/AA