



Price
£675,000

Freehold

5x  3x  2x 

**Stamford Drive,
Basildon, Essex, SS15**

OVER 60?

Secure this property
for up to **59% less!**

 **DOUGLAS
ALLEN**
Helping you move forwards



Main features

- 5 bedroom well presented detached family house located on a large plot
- Driveway parking for multiple vehicles
- Single garage
- Downstairs cloakroom
- Utility room
- South facing rear garden with outbuilding

Accommodation

GROUND FLOOR

Entrance Hallway
Lounge: 20'2 x 11'0 (6.15m x 3.36m)
Kitchen/Dining Room : 27'5 x 10'4 (8.36m x 3.15m)
Utility Area: 7'6 x 4'6 (2.29m x 1.37m)
Cloakroom

FIRST FLOOR

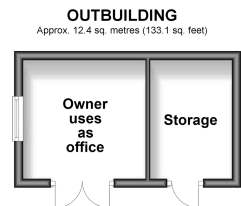
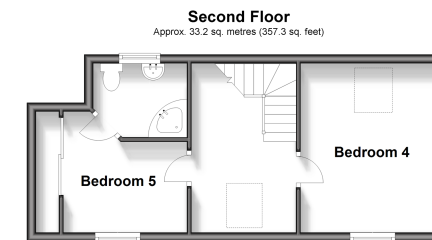
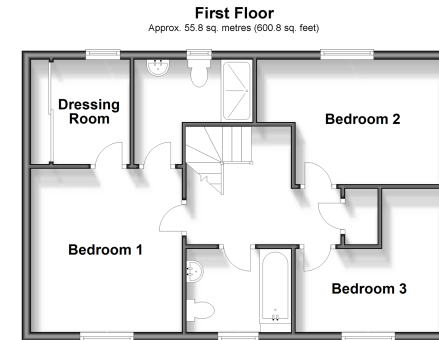
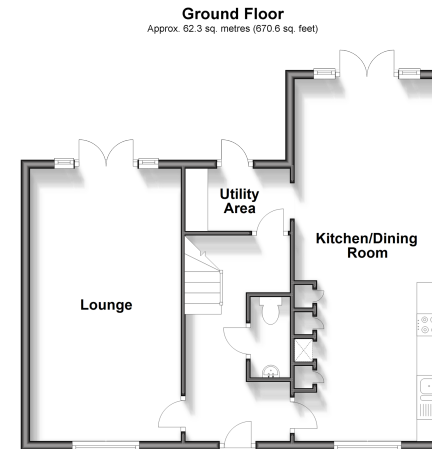
Landing
Bedroom 1: 11'3 x 11'3 (3.43m x 3.43m)
En-Suite Shower Room
Dressing Room
Bedroom 2: 10'6 x 10'4 (3.20m x 3.15m)
Bathroom
Bedroom 3: 13'4 x 9'3 (4.07m x 2.82m)

SECOND FLOOR

Landing
Bedroom 4: 15'2 x 10'8 (4.63m x 3.25m)
Bedroom 5: 10'7 x 9'0 (3.23m x 2.75m)
En-Suite Shower Room

OUTSIDE

Off Street Parking
Garage
Front Garden
Rear Garden
Outbuilding



Call Basildon - 01268 293993 ■ douglasallen.co.uk

- Legal advice should be taken to verify fixtures/fittings, planning, alterations and/or lease details
- Appliances & services are untested, dimensions are approximate and floor plans are not to scale
- Through a Homewise Home For Life Plan people aged 60+ can secure this property for up to 59% less, by purchasing a Lifetime Lease.



50508850/20240326/PM/GW