

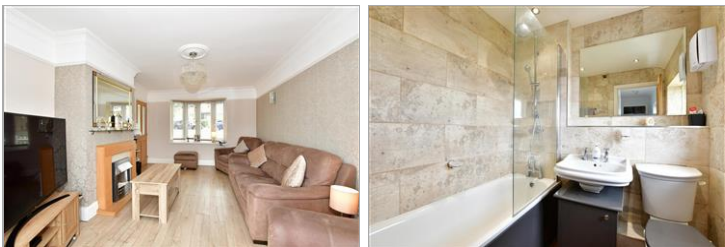
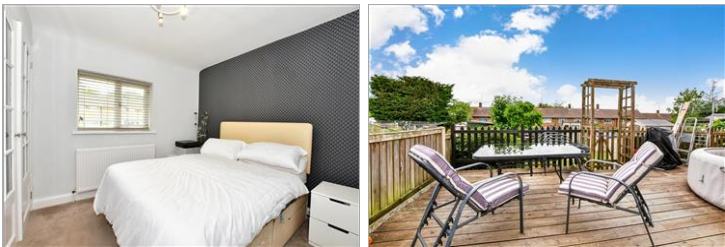


Price
£325,000

Freehold

3x  1x  1x 

**Mapleford Sweep,
Basildon, Essex, SS16**



Main features

- 3 double bedroom terraced house
- Potential to extend (STEP)
- Modern throughout
- Large rear garden
- Close to Basildon town centre, mainline station and local amenities

Accommodation

GROUND FLOOR

Entrance Hallway

Kitchen/Dining Room : 15'7 x 11'9 (4.75m x 3.58m)

Lounge: 17'6 x 11'2 (5.34m x 3.41m)

FIRST FLOOR

Landing

Bedroom 1: 11'9 x 9'7 (3.58m x 2.92m)

Bedroom 2: 8'4 x 7'0 (2.54m x 2.14m)

Bedroom 3: 8'10 x 8'3 (2.69m x 2.52m)

Bathroom

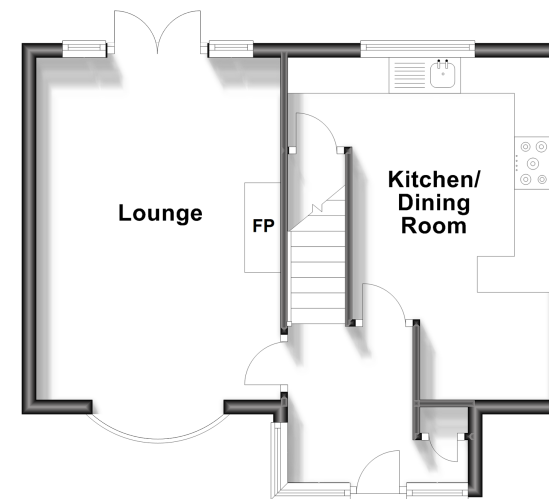
OUTSIDE

Rear Garden

Front Garden

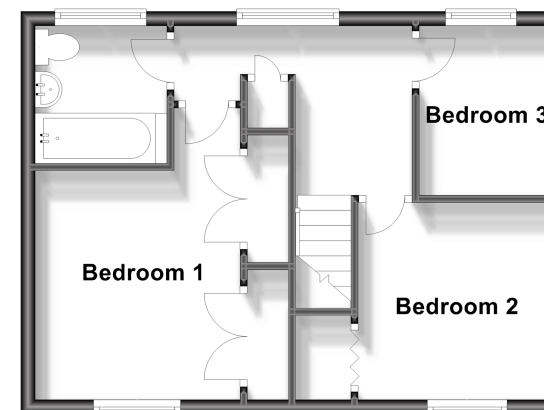
Ground Floor

Approx. 37.4 sq. metres (403.0 sq. feet)



First Floor

Approx. 37.4 sq. metres (402.1 sq. feet)



Call Basildon - 01268 293993 ■ douglasallen.co.uk

- Legal advice should be taken to verify fixtures/fittings, planning, alterations and/or lease details
- Appliances & services are untested, dimensions are approximate and floor plans are not to scale



50508717/20230923/MB/TF