



**Price**  
**£325,000**

**Freehold**

3x  1x  1x 

**Beatty Lane, Basildon,  
Essex, SS14**





## Main features

- **3 bedroom terraced house**
- **Modern kitchen/dining room**
- **Summer house located in rear garden**
- **Gas central heating and double glazing**
- **Close to local amenities**

## Accommodation

### GROUND FLOOR

Entrance Hallway  
 Kitchen/Dining Room : 15'9 x 12'3 (4.80m x 3.74m)  
 Lounge: 15'9 x 12'3 (4.80m x 3.74m)  
 Conservatory : 12'3 x 7'7 (3.74m x 2.31m)

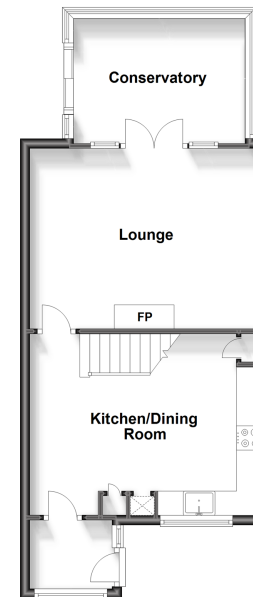
### FIRST FLOOR

Landing  
 Bedroom 1: 13'1 x 9'3 (3.99m x 2.82m)  
 Bedroom 2: 10'3 x 9'3 (3.13m x 2.82m)  
 Bedroom 3: 8'3 x 8'3 (2.52m x 2.52m)  
 Bathroom

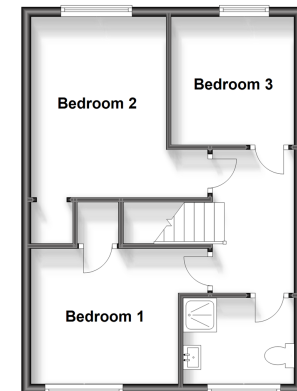
### OUTSIDE

Front Garden  
 Rear Garden  
 Summer House

**Ground Floor**  
 Approx. 48.8 sq. metres (525.2 sq. feet)



**First Floor**  
 Approx. 41.7 sq. metres (449.1 sq. feet)



**Call Basildon - 01268 293993 ■ [douglasallen.co.uk](http://douglasallen.co.uk)**

■ Legal advice should be taken to verify fixtures/fittings, planning, alterations and/or lease details

■ Appliances & services are untested, dimensions are approximate and floor plans are not to scale