



Price

£310,000

Freehold

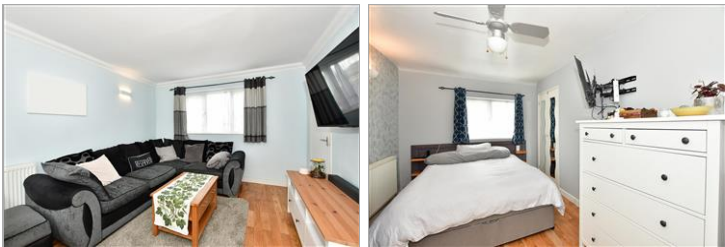
2x  1x  1x 

**Mapleford Sweep,
Basildon, Essex, SS16**

OVER 60?

Secure this property
for up to **59% less!**

 **DOUGLAS
ALLEN**
Helping you move forwards



Main features

- 2 bedroom terraced house
- Modern kitchen/diner and shower room
- Local schools close by
- Located close to local amenities
- Gas central heating and double glazing

Accommodation

GROUND FLOOR

Entrance Hallway

Lounge: 15'8 x 11'1 (4.78m x 3.38m)

Kitchen/Diner : 15'2 x 8'5 (4.63m x 2.57m)

FIRST FLOOR

Landing

Bedroom 1: 15'7 x 8'8 (4.75m x 2.64m)

Bedroom 2: 11'5 x 9'2 (3.48m x 2.80m)

Shower Room

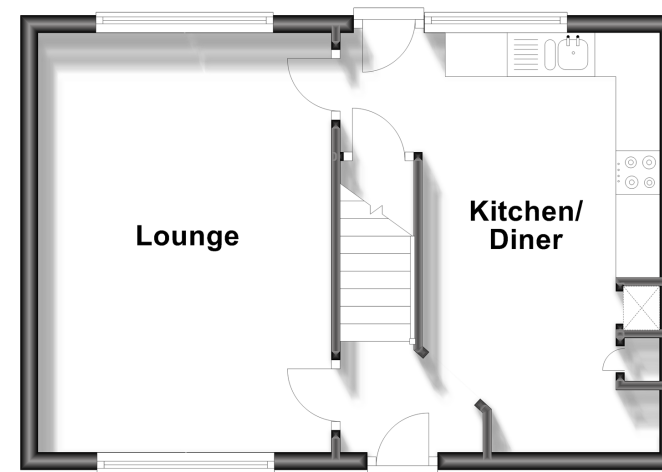
OUTSIDE

Front Garden

Rear Garden

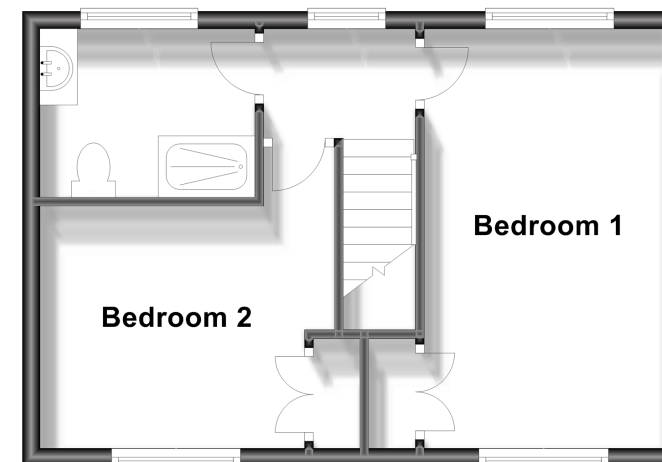
Ground Floor

Approx. 33.9 sq. metres (365.0 sq. feet)



First Floor

Approx. 33.9 sq. metres (365.0 sq. feet)



Call Basildon - 01268 293993 ■ douglasallen.co.uk

- Legal advice should be taken to verify fixtures/fittings, planning, alterations and/or lease details
- Appliances & services are untested, dimensions are approximate and floor plans are not to scale
- Through a Homewise Home For Life Plan people aged 60+ can secure this property for up to 59% less, by purchasing a Lifetime Lease.



50508647/20230909/MB/LC