



Price
£350,000

Freehold

3x  1x  1x 

**Turpins, Basildon, Essex,
SS14**

OVER 60?

Secure this property
for up to **59% less!**

 **DOUGLAS
ALLEN**
Helping you move forwards



Main features

- **3 double bedroom extended terraced house**
- **Off street parking for 2 cars**
- **Close to Basildon station, shops and amenities**
- **Gas central heating and double glazing**
- **Kitchen/diner**

Accommodation

GROUND FLOOR

Entrance Hallway
Lounge/Diner: 24'1 x 10'7 (7.35m x 3.23m)
Kitchen/Breakfast Area: 20'1 x 7'6 (6.13m x 2.29m)
Utility Area: 6'3 x 4'6 (1.91m x 1.37m)

FIRST FLOOR

Landing
Bedroom 1: 11'4 x 10'2 (3.46m x 3.10m)
Bedroom 2: 10'3 x 8'6 (3.13m x 2.59m)
Bathroom

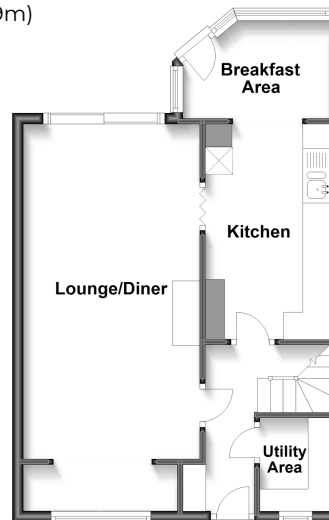
SECOND FLOOR

Bedroom 3: 12'7 x 11'8 (3.84m x 3.56m)

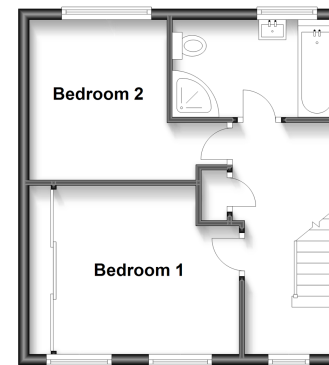
OUTSIDE

Off Street Parking
Rear Garden

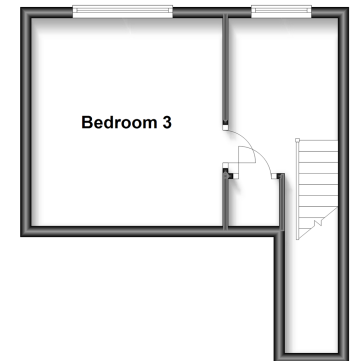
Ground Floor
Approx. 44.8 sq. metres (482.1 sq. feet)



First Floor
Approx. 34.7 sq. metres (373.5 sq. feet)



Second Floor
Approx. 23.8 sq. metres (256.6 sq. feet)



Call Basildon - 01268 293993 ■ douglasallen.co.uk

■ Legal advice should be taken to verify fixtures/fittings, planning, alterations and/or lease details
■ Through a Homewise Home For Life Plan people aged 60+ can secure this property for up to 59% less, by purchasing a Lifetime Lease.

■ Appliances & services are untested, dimensions are approximate and floor plans are not to scale