



Price

£195,000

Leasehold

1x  1x  1x 

**Teal Court, Southernhay
Close, Basildon, Essex,
SS14**

OVER 60?

Secure this property
for up to **59% less!**

 **DOUGLAS
ALLEN**
Helping you move forwards



Main features

- 1 bedroom first floor flat in good condition
- Open plan living area
- Walking distance to Basildon town centre and mainline station
- Allocated parking bay
- Black out blinds throughout
- Brushed chrome switches and sockets

Accommodation

FIRST FLOOR

Entrance

Bathroom

Bedroom : 11'6 x 11'2 (3.51m x 3.41m)

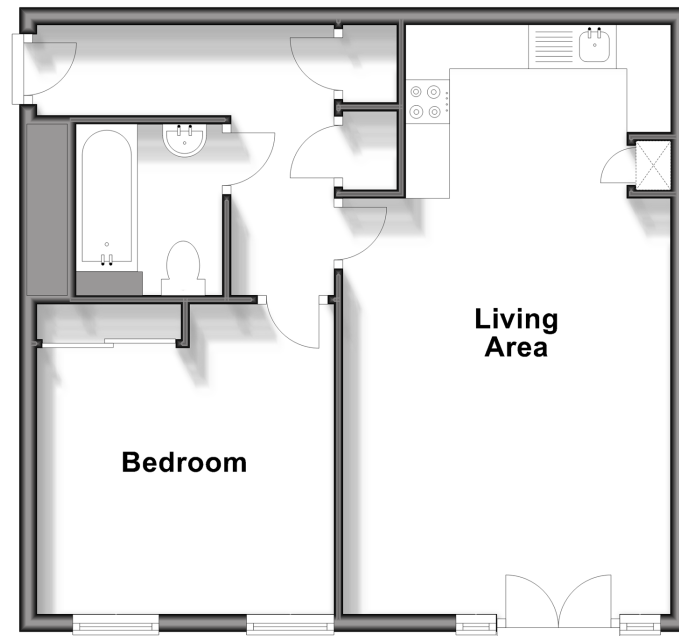
Living Area: 22'0 x 12'2 (6.71m x 3.71m)

OUTSIDE

Allocated Parking Bay

First Floor

Approx. 48.6 sq. metres (522.8 sq. feet)



Call Basildon - 01268 293993 ■ douglasallen.co.uk

■ Legal advice should be taken to verify fixtures/fittings, planning, alterations and/or lease details
 ■ Through a Homewise Home For Life Plan people aged 60+ can secure this property for up to 59% less, by purchasing a Lifetime Lease.

■ Appliances & services are untested, dimensions are approximate and floor plans are not to scale