



OVER 60?

Secure this property
for up to **59% less!**

Price

£170,000

Leasehold

1x  1x  1x 

**Widgeons, Pitsea,
Basildon, Essex, SS13**

 **DOUGLAS
ALLEN**
Helping you move forwards



Main features

- 1 bedroom ground floor apartment
- Well presented throughout
- Shared garden
- Gas central heating and double glazing
- Close to Pitsea town centre, shops and train station

Accommodation

GROUND FLOOR

Entrance

Lounge: 12'8 x 10'4 (3.86m x 3.15m)

Kitchen: 9'7 x 8'4 (2.92m x 2.54m)

Bathroom

Storage : 9'9 x 3'3 (2.97m x 0.99m)

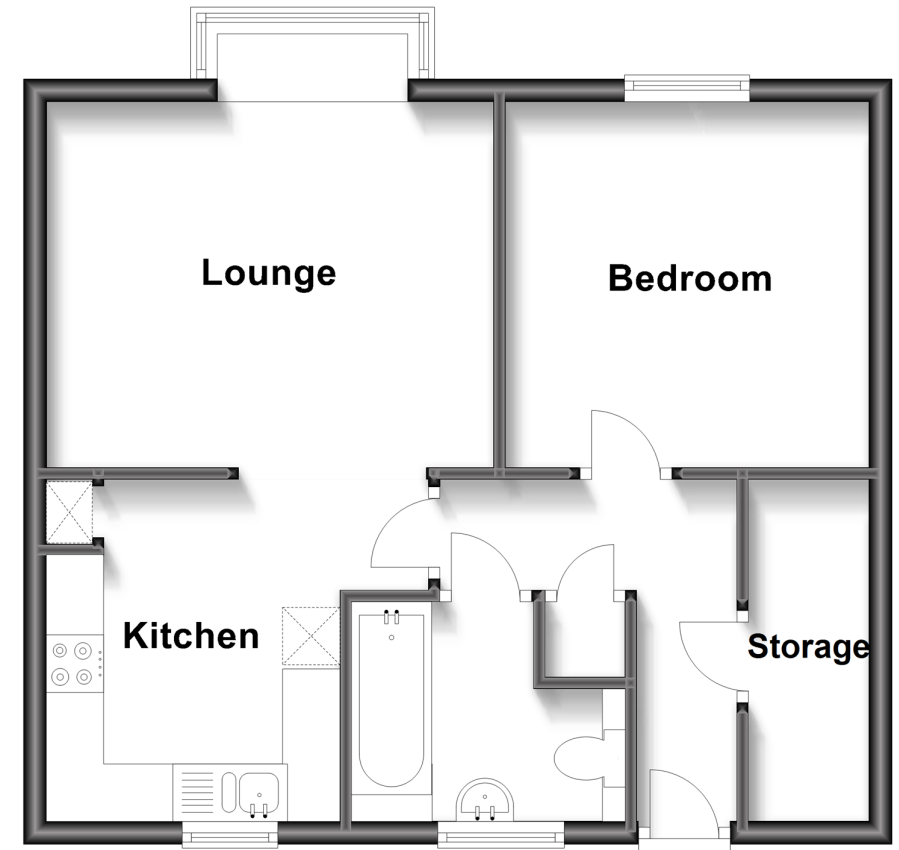
Bedroom: 10'6 x 6'0 (3.20m x 1.83m)

OUTSIDE

Shared Garden

Ground Floor

Approx. 45.4 sq. metres (489.1 sq. feet)



Call Basildon - 01268 293993 ■ douglasallen.co.uk

- Legal advice should be taken to verify fixtures/fittings, planning, alterations and/or lease details
- Appliances & services are untested, dimensions are approximate and floor plans are not to scale
- Through a Homewise Home For Life Plan people aged 60+ can secure this property for up to 59% less, by purchasing a Lifetime Lease.



50508408/20230123/MB/LC