



Price
£315,000

Freehold

3x  1x  1x 

**Exeter Close, Basildon,
Essex, SS14**

OVER 60?

Secure this property
for up to **59% less!**

 **DOUGLAS
ALLEN**
Helping you move forwards



Main features

- **3 bedroom well presented terraced house**
- **On street parking to the front and rear**
- **Front and rear gardens**
- **Open plan kitchen/lounge and dining area**
- **Located in the popular Fryerns area**

Accommodation

GROUND FLOOR

Entrance Hallway
Lounge/Kitchen/Dining Area: 24'2 x 17'7 (7.37m x 5.36m)

FIRST FLOOR

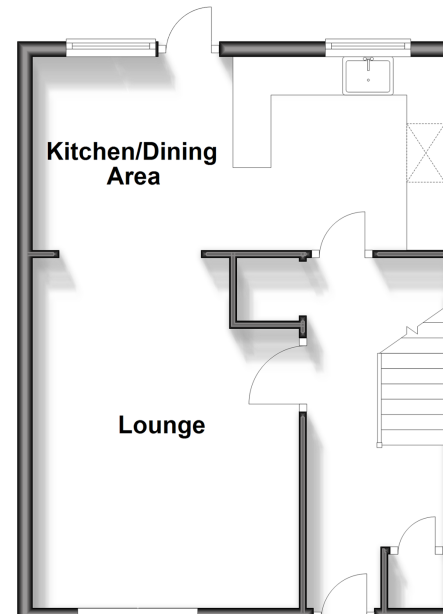
Landing
Bedroom 1 : 13'7 x 8'7 (4.14m x 2.62m)
Bedroom 2: 9'6 x 7'9 (2.90m x 2.36m)
Bedroom 3: 9'5 x 6'6 (2.87m x 1.98m)
Bathroom

OUTSIDE

Front Garden
Rear Garden

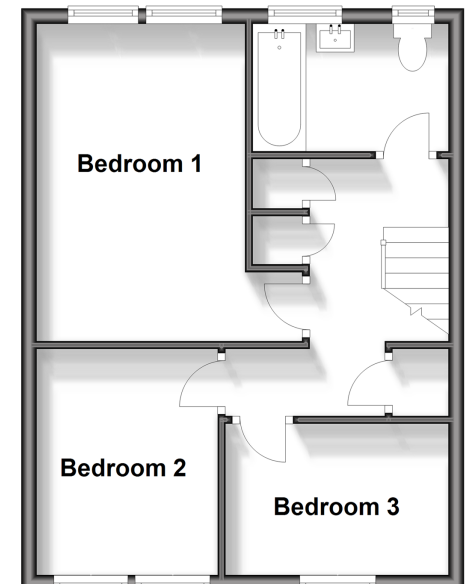
Ground Floor

Approx. 39.1 sq. metres (420.8 sq. feet)



First Floor

Approx. 39.1 sq. metres (420.8 sq. feet)



Call Basildon - 01268 293993 ■ douglasallen.co.uk

■ Legal advice should be taken to verify fixtures/fittings, planning, alterations and/or lease details
■ Through a Homewise Home For Life Plan people aged 60+ can secure this property for up to 59% less, by purchasing a Lifetime Lease.

■ Appliances & services are untested, dimensions are approximate and floor plans are not to scale



50507963/20240330/MB/GW