



Price
£350,000

Freehold

3x  1x  3x 

**Grimston Road,
Basildon, Essex, SS14**

 **DOUGLAS
ALLEN**
Helping you move forwards



Main features

- **3 bedroom end of terraced house**
- **Extended to the rear**
- **Property offered with no onward chain**
- **Gas central heating and double glazing**
- **Off street parking for 2 cars**

Accommodation

GROUND FLOOR

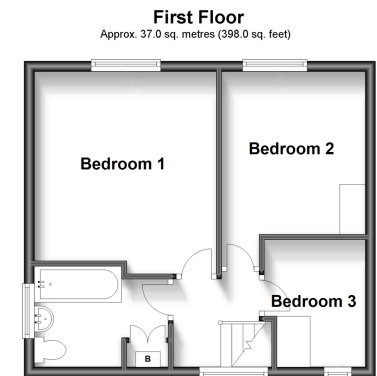
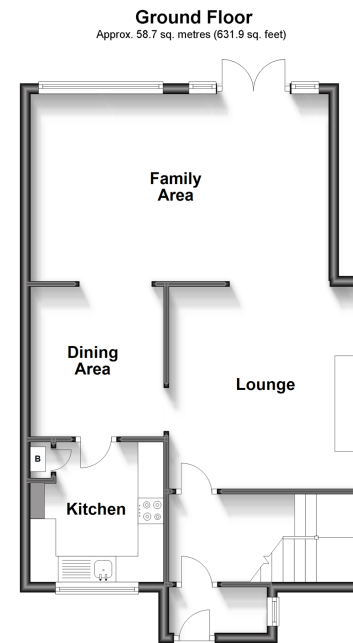
Entrance Hallway
 Kitchen: 8'9 x 8'5 (2.67m x 2.57m)
 Dining Area: 9'5 x 8'5 (2.87m x 2.57m)
 Family Area: 19'2 x 11'4 (5.85m x 3.46m)
 Lounge: 13'0 x 12'4 (3.97m x 3.76m)

FIRST FLOOR

Landing
 Bedroom 1: 12'2 x 11'7 (3.71m x 3.53m)
 Bedroom 2: 10'5 x 9'4 (3.18m x 2.85m)
 Bedroom 3: 8'1 x 6'4 (2.47m x 1.93m)
 Bathroom

OUTSIDE

Front Garden
 Rear Garden
 Off road Parking



Call Basildon - 01268 293993 ■ douglasallen.co.uk

■ Legal advice should be taken to verify fixtures/fittings, planning, alterations and/or lease details

■ Appliances & services are untested, dimensions are approximate and floor plans are not to scale



50505474/20230613/LC/LC