



Price
£325,000

Freehold

3x  1x  2x 

**Beehive Lane, Basildon,
Essex, SS14**

 **DOUGLAS
ALLEN**
Helping you move forwards



Main features

- **3 bedroom town house**
- **Off street parking and a garage**
- **Close to Basildon town centre and mainline station**
- **Property ready to move straight into**

Accommodation

GROUND FLOOR

Entrance Hallway
Kitchen/Sitting Area: 22'1 x 9'7 (6.74m x 2.92m)
Dining Area: 16'4 x 10'2 (4.98m x 3.10m)

FIRST FLOOR

Landing
Lounge: 16'4 x 14'7 (4.98m x 4.45m)
Bathroom
WC

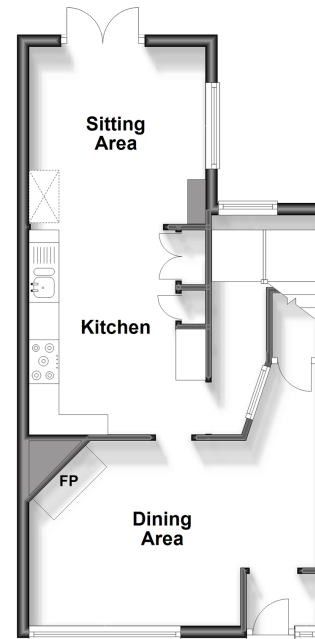
SECOND FLOOR

Landing
Bedroom 1: 14'7 x 9'3 (4.45m x 2.82m)
Bedroom 2: 13'0 x 8'0 (3.97m x 2.44m)
Bedroom 3: 10'5 x 6'7 (3.18m x 2.01m)

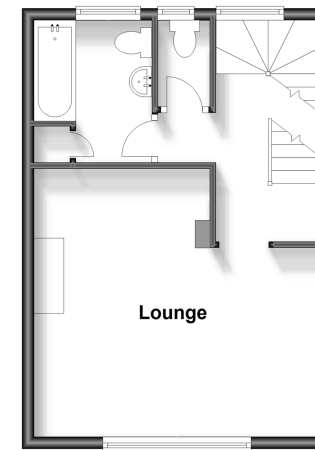
OUTSIDE

Off Street Parking
Rear Garden
Garage

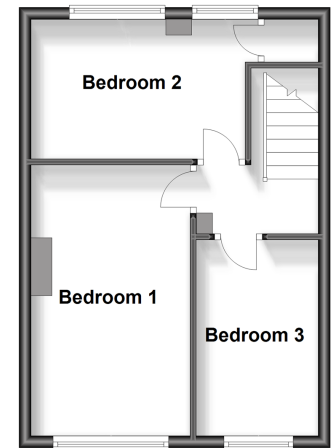
Ground Floor
Approx. 41.2 sq. metres (443.5 sq. feet)



First Floor
Approx. 33.4 sq. metres (359.5 sq. feet)



Second Floor
Approx. 33.4 sq. metres (359.5 sq. feet)



Call Basildon - 01268 293993 ■ douglasallen.co.uk

■ Legal advice should be taken to verify fixtures/fittings, planning, alterations and/or lease details

■ Appliances & services are untested, dimensions are approximate and floor plans are not to scale

