



Price

£725,000

Freehold

3x  3x  2x 

**Hillside Road, Billericay,
Essex, CM11**

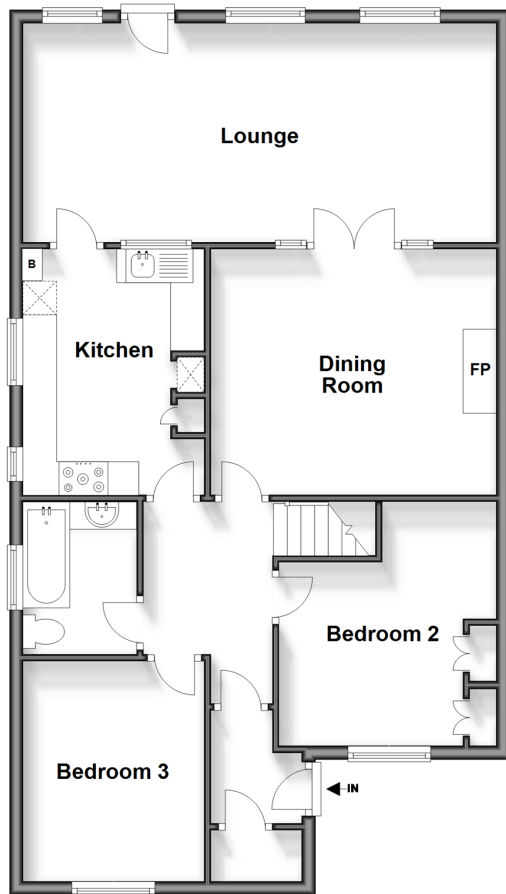
OVER 60?

Secure this property
for up to **59% less!**

 **DOUGLAS
ALLEN**
Helping you move forwards

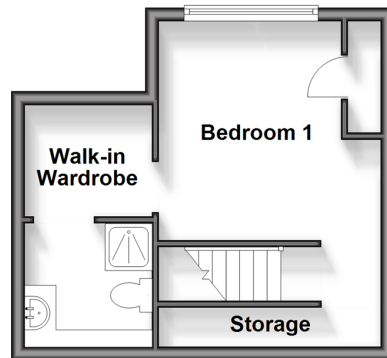
Ground Floor

Approx. 84.4 sq. metres (908.4 sq. feet)



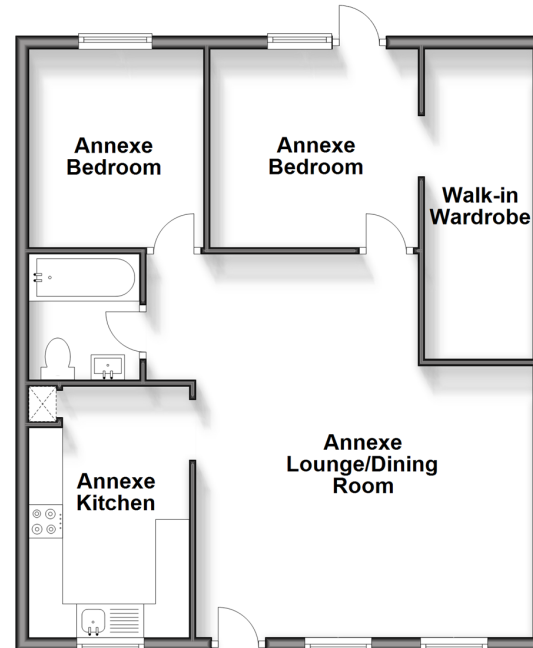
First Floor

Approx. 23.2 sq. metres (250.1 sq. feet)



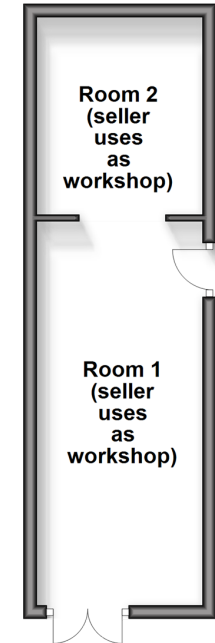
Outbuilding 1

Approx. 65.7 sq. metres (707.0 sq. feet)



Outbuilding 2

Approx. 21.7 sq. metres (233.2 sq. feet)



Accommodation

GROUND FLOOR

Hallway
Lounge: 25'1 x 10'8 (7.65m x 3.25m)
Kitchen: 11'10 x 8'10 (3.61m x 2.69m)
Dining Room : 14'0 x 12'0 (4.27m x 3.66m)
Bedroom 2: 11'10 x 11'3 (3.61m x 3.43m)
Bedroom 3: 10'9 x 9'10 (3.28m x 3.00m)
Bathroom

FIRST FLOOR

Bedroom 1: 13'8 x 10'10 (4.17m x 3.30m)
Walk-in Wardrobe
En-Suite Shower Room

ANNEXE

Annexe Lounge/Dining Room: 19'0 x 16'6 (5.80m x 5.03m)
Annexe Kitchen: 12'3 x 7'10 (3.74m x 2.39m)
Annexe Bedroom 1: 10'2 x 9'7 (3.10m x 2.92m)
Annexe Walk-in Wardrobe
Annexe Bedroom 2: 9'8 x 8'7 (2.95m x 2.62m)
Annexe Bathroom

OUTBUILDING 2

Used as Workshop

OUTSIDE

Driveway
Rear Garden



Main features

- 3 bedroom semi-detached bungalow plus separate self contained 2 bedroom annexe
- Large lounge and separate dining room
- En-suite shower room and walk-in wardrobe to bedroom 1
- Large driveway for multiple vehicles
- Outbuilding currently used as a workshop
- Short walk from the High Street and railway station



Nearest Schools

Primary Schools: Quilters Junior School 0.4 miles, Sunnymede Junior School 0.7 miles, South Green Junior School 1.1 miles



Transport Information

Train Stations: Billericay 1.1 miles, Basildon 4.1 miles, Wickford 4.2 miles



Address

Hillside Road, Billericay, Essex, CM11



Directions

For directions to this property please contact us.



Call Billericay Branch 01277 631377 ■ douglasallen.co.uk



■ Legal advice should be taken to verify fixtures/fittings, planning, alterations and/or lease details ■ Appliances & services are untested, dimensions are approximate and floor plans are not to scale
■ Through a Homewise Home For Life Plan people aged 60+ can secure this property for up to 59% less, by purchasing a Lifetime Lease.



50313154/20240509/BH/BH