



Price
£425,000

Freehold

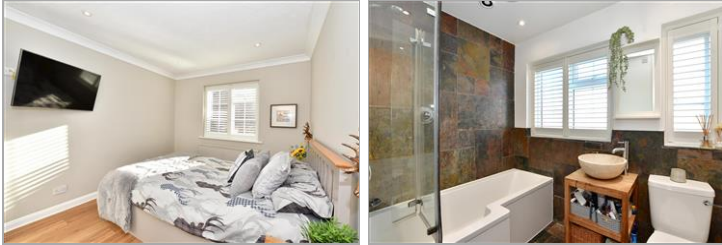
3x  1x  1x 

**Doublet Mews,
Billericay, Essex, CM11**

OVER 60?

Secure this property
for up to **59% less!**

 **DOUGLAS
ALLEN**
Helping you move forwards



Main features

- 3 bedroom end of terrace house
- Open plan living with log burner in lounge area
- Conservatory
- Fantastic outbuilding split into 3 separate areas of an office, shed and gym/storage area/play room
- Allocated parking

Accommodation

GROUND FLOOR

Porch

Lounge: 15'3 x 12'6 (4.65m x 3.81m)

Kitchen : 9'3 x 9'3 (2.82m x 2.82m)

Dining Area: 9'6 x 7'5 (2.90m x 2.26m)

Conservatory: 15'4 x 10'2 (4.68m x 3.10m)

FIRST FLOOR

Landing

Bedroom 1: 12'7 x 9'9 (3.84m x 2.97m)

Bedroom 2: 9'7 x 8'2 (2.92m x 2.49m)

Bedroom 3: 10'10 x 6'5 (3.30m x 1.96m)

Bathroom: 7'9 x 5'7 (2.36m x 1.70m)

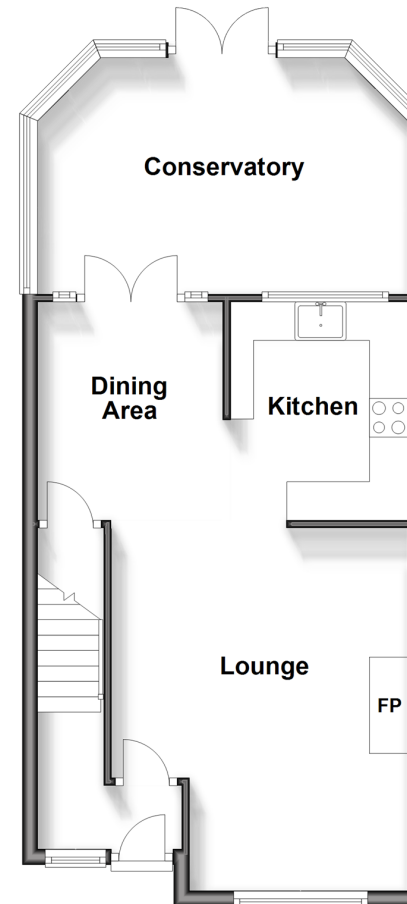
OUTSIDE

Front and Rear Gardens

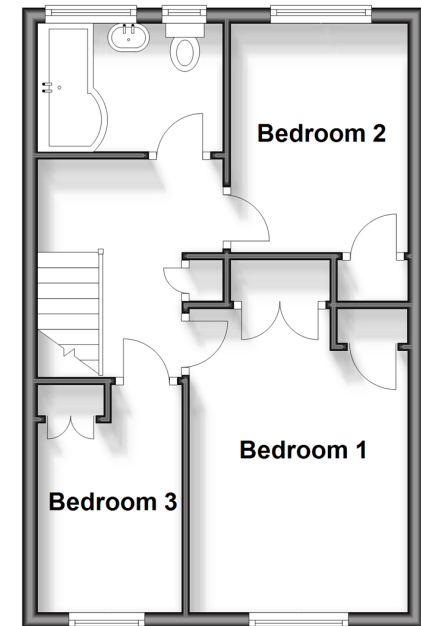
Allocated Parking

Outbuilding x2

Ground Floor
Approx. 50.2 sq. metres (540.9 sq. feet)



First Floor
Approx. 36.8 sq. metres (395.6 sq. feet)



Call Billericay - 01277 631377 ■ douglasallen.co.uk

- Legal advice should be taken to verify fixtures/fittings, planning, alterations and/or lease details
- Appliances & services are untested, dimensions are approximate and floor plans are not to scale
- Through a Homewise Home For Life Plan people aged 60+ can secure this property for up to 59% less, by purchasing a Lifetime Lease.



50313143/20240120/RP/AA