



Price
£425,000

Freehold

2x  1x  1x 

**Burns Close, Billericay,
Essex, CM11**

OVER 60?

Secure this property
for up to **59% less!**

 **DOUGLAS
ALLEN**
Helping you move forwards



Main features

- 2 bedroom mid-terrace house in immaculate condition throughout
- Open plan living
- Generous sized bedrooms
- Close proximity to the station
- In catchment for local desirable schools
- Off street parking for 2 cars

Accommodation

GROUND FLOOR

Hallway

Lounge/Dining Room: 16'3 x 11'6 (4.96m x 3.51m)

Kitchen: 11'1 x 5'6 (3.38m x 1.68m)

Cloakroom

FIRST FLOOR

Landing

Bedroom 1: 11'0 x 10'2 (3.36m x 3.10m)

Bedroom 2: 11'5 x 10'5 (3.48m x 3.18m)

Bathroom

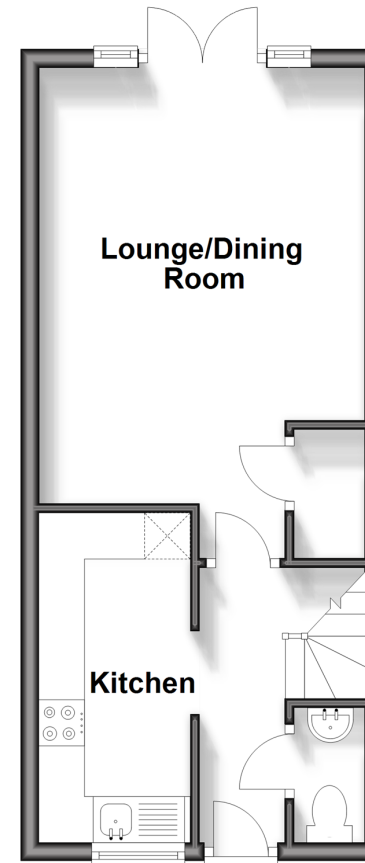
OUTSIDE

Off Street Parking

Garden

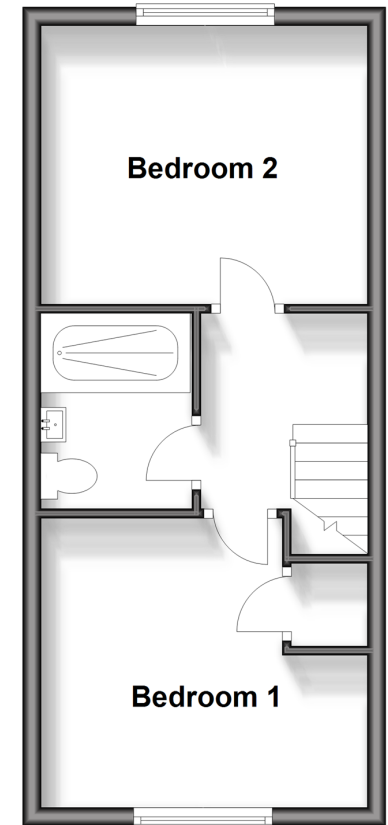
Ground Floor

Approx. 30.0 sq. metres (323.2 sq. feet)



First Floor

Approx. 30.5 sq. metres (328.2 sq. feet)



Call Billericay - 01277 631377 ■ douglasallen.co.uk

- Legal advice should be taken to verify fixtures/fittings, planning, alterations and/or lease details
- Appliances & services are untested, dimensions are approximate and floor plans are not to scale
- Through a Homewise Home For Life Plan people aged 60+ can secure this property for up to 59% less, by purchasing a Lifetime Lease.



50313142/20240224/RP/AA