



**Price**  
**£550,000**

**Freehold**

2x  1x  1x 

**First Avenue, Billericay,  
Essex, CM12**

**OVER 60?**

Secure this property  
for up to **59% less!**

 **DOUGLAS  
ALLEN**  
Helping you move forwards





## Main features

- **Spacious semi detached bungalow**
- **Good condition throughout**
- **Excellent size outbuilding with hydrotherapy hot tub**
- **19' lounge and modern kitchen**
- **4 piece bathroom suite**
- **Garage and driveway**
- **Short walk to the High Street**

## Accommodation

### GROUND FLOOR

Porch

Lounge: 19'5 x 14'5 (5.92m x 4.40m)

Kitchen: 23'5 x 16'0 (7.14m x 4.88m)

Study: 12'7 x 11'7 (3.84m x 3.53m)

Shower Room

### FIRST FLOOR

Landing

Bedroom 1: 11'7 x 11'0 (3.53m x 3.36m)

Bedroom 2: 13'5 x 11'4 (4.09m x 3.46m)

Bathroom

### OUTSIDE

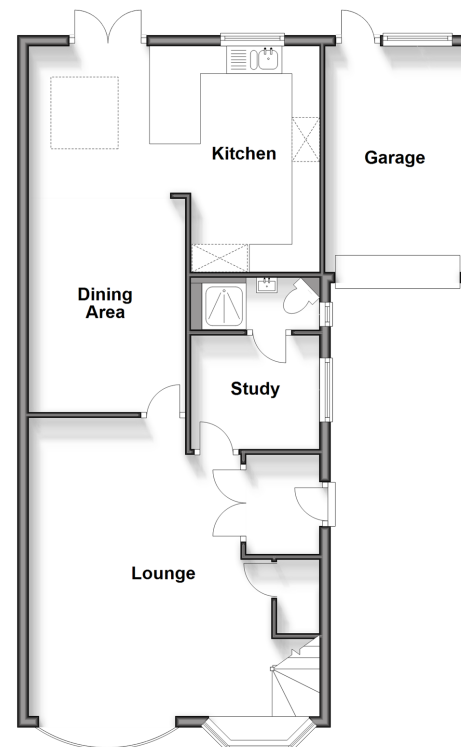
Off Street Parking

Garage: 26'0 x 9'8 (7.93m x 2.95m)

Outbuilding: 25'0 x 20'0 (7.63m x 6.10m)

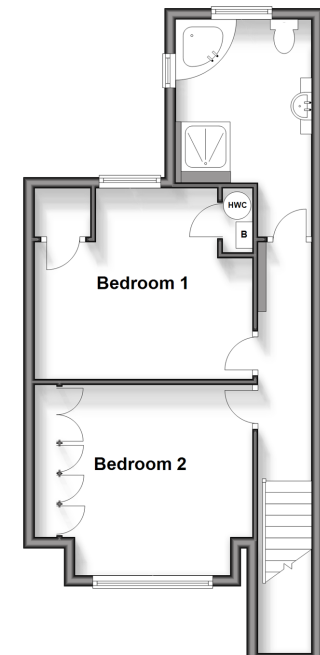
### Ground Floor

Approx. 64.5 sq. metres (694.5 sq. feet)



### First Floor

Approx. 43.3 sq. metres (465.9 sq. feet)



**Call Billericay - 01277 631377 ■ [douglasallen.co.uk](http://douglasallen.co.uk)**

■ Legal advice should be taken to verify fixtures/fittings, planning, alterations and/or lease details  
 ■ Through a Homewise Home For Life Plan people aged 60+ can secure this property for up to 59% less, by purchasing a Lifetime Lease.

■ Appliances & services are untested, dimensions are approximate and floor plans are not to scale



50313117/20231102/RP/TF